

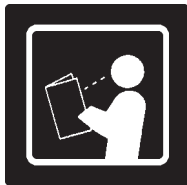
# **POWER JACK**

## **MATERIAL MOVER**

### **OPERATOR'S INSTRUCTION MANUAL**



**WARNING:** Serious injury may result if this product is misused. The manufacturer provides the following instructions for use and care of this equipment and relies upon the purchaser to see to it that these instructions are made clear to the person who will be using the equipment.



Reciba entrenamiento y entienda el manual de instrucciones, o haga que le lean el manual, antes de operar esta unidad.

**GARLOCK**<sup>TM</sup>

**EQUIPMENT COMPANY**

2601 NIAGARALANE, PLYMOUTH, MN 55447

Phone: (763) 553-1935

Fax (763) 553-7765

Part Number: 160926

Revised: 11/30/05

---

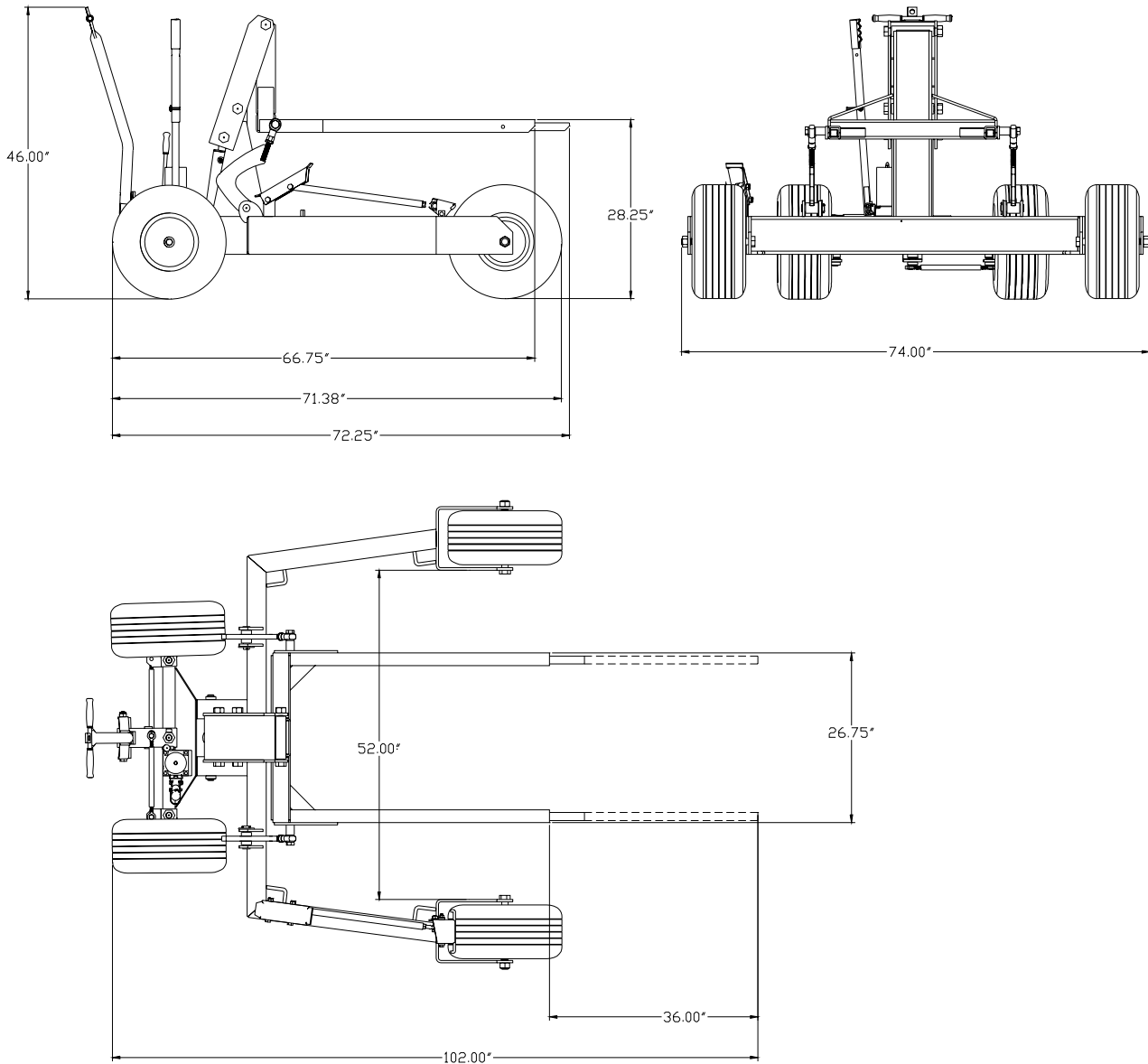
# Table of Contents

<b>Power Jack Material Mover .....</b>	<b>4</b>
<i>Specifications .....</i>	<i>5</i>
<i>Contact Pressure on The Roof .....</i>	<i>5</i>
<b>Safety Precautions .....</b>	<b>6</b>
<b>OSHA .....</b>	<b>7</b>
<i>Job Setup .....</i>	<i>7</i>
<i>Maintenance and Precautions.....</i>	<i>8</i>
<i>Setup &amp; Operation .....</i>	<i>8</i>
<i>Using Extended Arms .....</i>	<i>10</i>
<i>Grease Points.....</i>	<i>11</i>
<i>Major Components.....</i>	<i>12</i>
<i>Hydraulic Components .....</i>	<i>13</i>
<i>Steering Assembly .....</i>	<i>14</i>
<b>Update your instructions and decals.....</b>	<b>15</b>

# Power Jack Material Mover

Thank you for purchasing this quality Garlock product. With proper use and care, this product will serve you for years. For the safety of the operator and other people on the job site, it is imperative that the operator read and understand these instructions before using.

DATE OF PURCHASE \_\_\_\_\_ SERIAL NUMBER \_\_\_\_\_



## Power Jack Material Mover Specifications

Length	71.38"	1813 mm
Width	74"	1880 mm
Height	46"	1168 mm
Max. Fork Hieght	28.25"	718 mm
Fork Extension Length	36"	914 mm
Weight	600 Lbs.	272 Kg.
Wheels Front	18 x 8.5 x 8 x 1 6 PLY	18 x 8.5 x 8 x 1 6 PLY
Front Wheel Pressure	55 psi	3.7 Atm.
Wheels Rear	18 x 8.5 x 8 x 1 4 PLY	18 x 8.5 x 8 x 1 4 PLY
Rear Wheel Pressure	22 psi	1.5 Atm.
Hydraulic Fluid	MV32 or Equivalent	MV32 or Equivalent
Max. Work Load	2500 Lbs.	1134 Kg.

## Contact Pressure on The Roof

When fully loaded (2500 Lbs.), the combined weight of load and power Jack is 3100 Lbs is spread over a 29 SQ. ft. area.

Contact Pressure at the tire patches when fully loaded is as follows:

Front: 23 Psi per tire  
Rear: 18 Pst per tire

---

# Safety Precautions

## Do Not Operate Before Reading

**INTENDED USE:** This machine is intended to be used for the sole purpose of lifting & moving materials on flat, level roofs. Any other use of this equipment voids the manufacturer's warranty and is the sole responsibility of the owner/user, should damage or injury occur.

---

For use on flat, level roofs or floors only.

---

Drive slowly when towing loaded Power Jack.  
Keep other people clear of machine during operation.

---

Do not operate within ten feet of roof edge (or within six feet if operating parallel to edge).

---

Guard all openings in the roof.

---

Do not operate the machine if it is damaged. Repairs must be made by a qualified mechanic. Replace damaged components.

---

Do not modify the machine. Do not operate a machine that has been modified.

---

Keep the equipment in good operating condition.

---

Avoid slick areas on the roof to prevent slipping.

---

Do not operate this machine if you are under the influence of alcohol, marijuana, or drugs that could impair judgment and ability.

---

The owner or operator must see that all warning decals are in place and legible. Write to Garlock Equipment Co. for replacement decals and instructions if needed.

---

Operator must be trained to do the specific job before operating equipment on an actual job.

---

Do not overload machine 2500 Lbs. Max.

---

Do not exceed weight carrying capacity of the deck. Check with owner or architect for deck capacity.

---

Do not do anything underneath the load. Do not put feet inside of Power Jack frame when loaded.

---

---

**Do not tow on a highway**

Max. towing speed 10 miles per hour.

---

The following information is quoted from OSHA:  
Safety and Health Standards Digest, OSHA 2202 revised September 1983.

It is usually a good idea for the employer to keep a record of all safety and health training. Records can provide evidence of the employer's good faith and compliance with OSHA standards. Documentation can also supply an answer to one of the first questions an accident investigator will ask: "Was the injured party trained to do the job?"

Training in the proper performance of a job is time and money well spent and the employer might regard it as an investment rather than an expense. An effective program of safety and health training for workers can result in fewer accidents and illnesses, better morale and lower insurance premiums and other benefits.

Readers with questions concerning worker safety and health training should contact their regional OSHA office.

## Job Set Up

Check for roof deterioration and wear before allowing equipment and personnel access to roof. Determine the load carrying capacity of the deck. Study the data in this manual about weight of the unit empty and fully loaded. Also consider the weight factors of other equipment and personnel.

Clear the work area of all potentially dangerous obstacles.

Keep unauthorized people away from the job site.

Before raising the equipment & components to the roof, select a hoisting location that is flat, level and away from power lines and obstacles. Warning lines or safety cones with signs are to be set up around the work site to keep unauthorized people and vehicles away. Remove any obstacles that could cause falls or injuries.

Check to see that all roof openings are properly covered. Set up a warning line system: six feet from roof edge for work parallel to the edge; ten feet from edge for work perpendicular to edge. Check to see that warning lines meet OSHA requirements.

Set up guardrails at the roof edge material handling area. Guardrails must be able to withstand 200 lbs. top rail pressure with a minimum of deflection. (A portable guardrail system that meets OSHA requirements is available from Garlock Equipment Co.).



---

5. Push and pull the Pump Handle (black handle) from side to side to raise the forks. Handle may be extended by removing chrome pin, pulling handle up to align the next hole in lower handle (approx. 12 inches) and reinserting chrome pin in upper hole. This is only necessary when lifting loads over 1500 lbs. and simply makes the handle easier to move.

6. To lower the load; Make sure the load is placed where you want it. If lowering onto a trailer make sure the load will be centered on the trailer and placed squarely on top of trailer before lowering the load.

Push the Valve Lever (red handle) forward. The power Jack will lower the load at a safe and controlled speed.

Pull the power jack backward to draw forks out from beneath the pallet making sure nothing catches.

Close the valve lever (red handle); Raise the forks off of the roof surface if necessary to prevent damaging the roof and move power jack wherever you need it next.

7. Stay away from Roof Edge when lifting or moving loads.



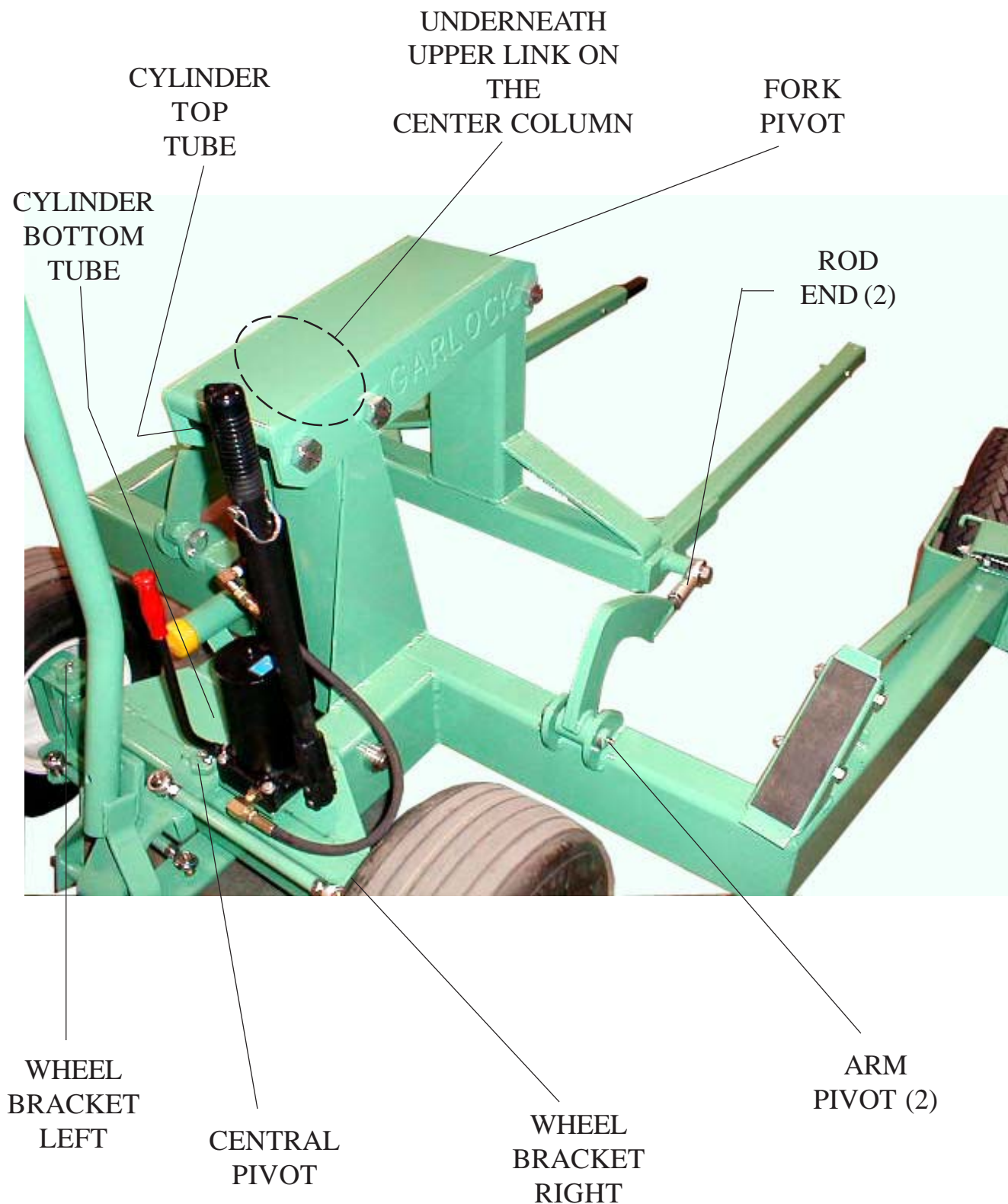
## Using Extension Arms



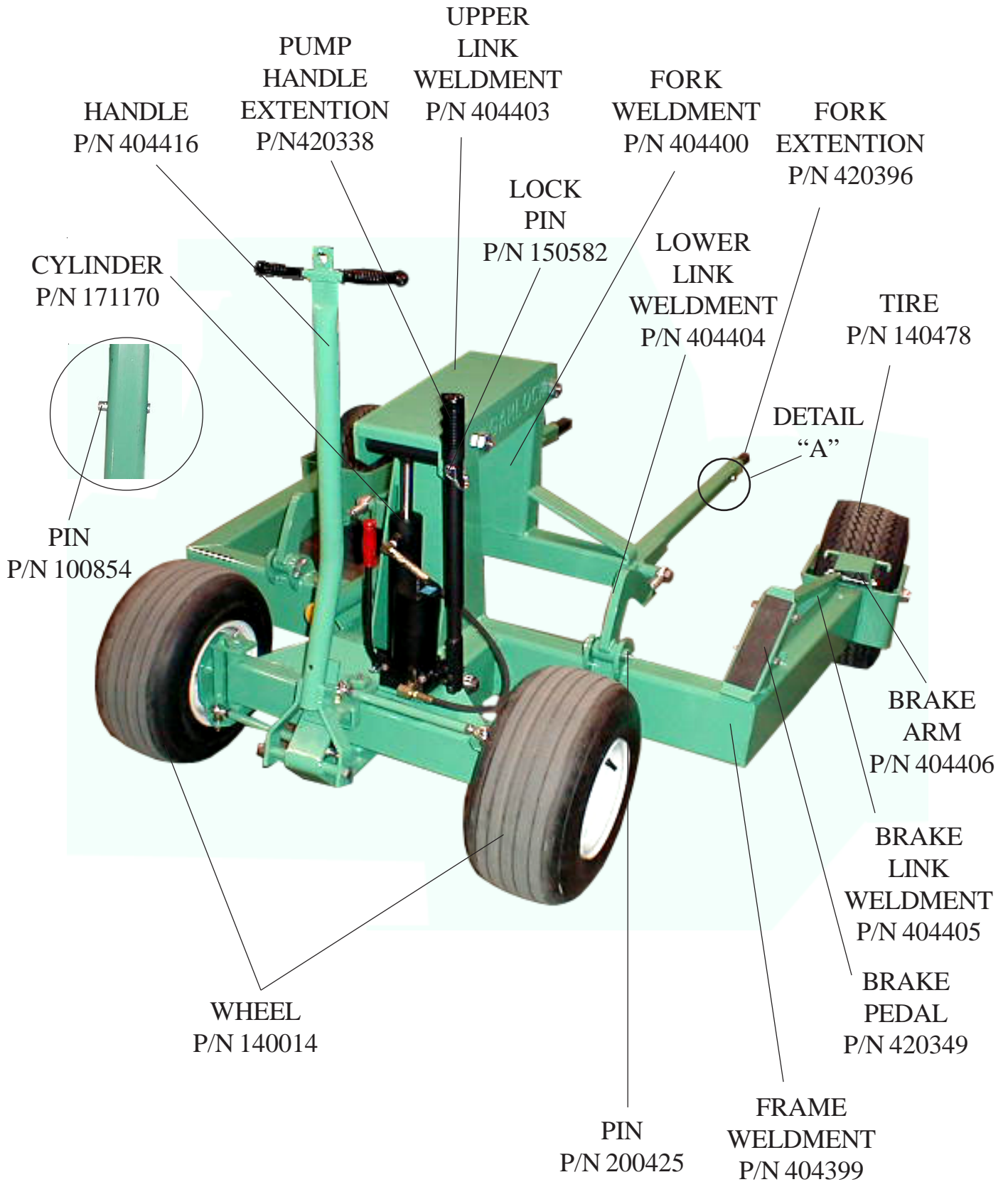
- \* Push small end of pin with thumb and remove from fork
- \* Slide fork extension out until holes align (@ 3 Feet)
- \* Reinsert Pin to secure fork extension.



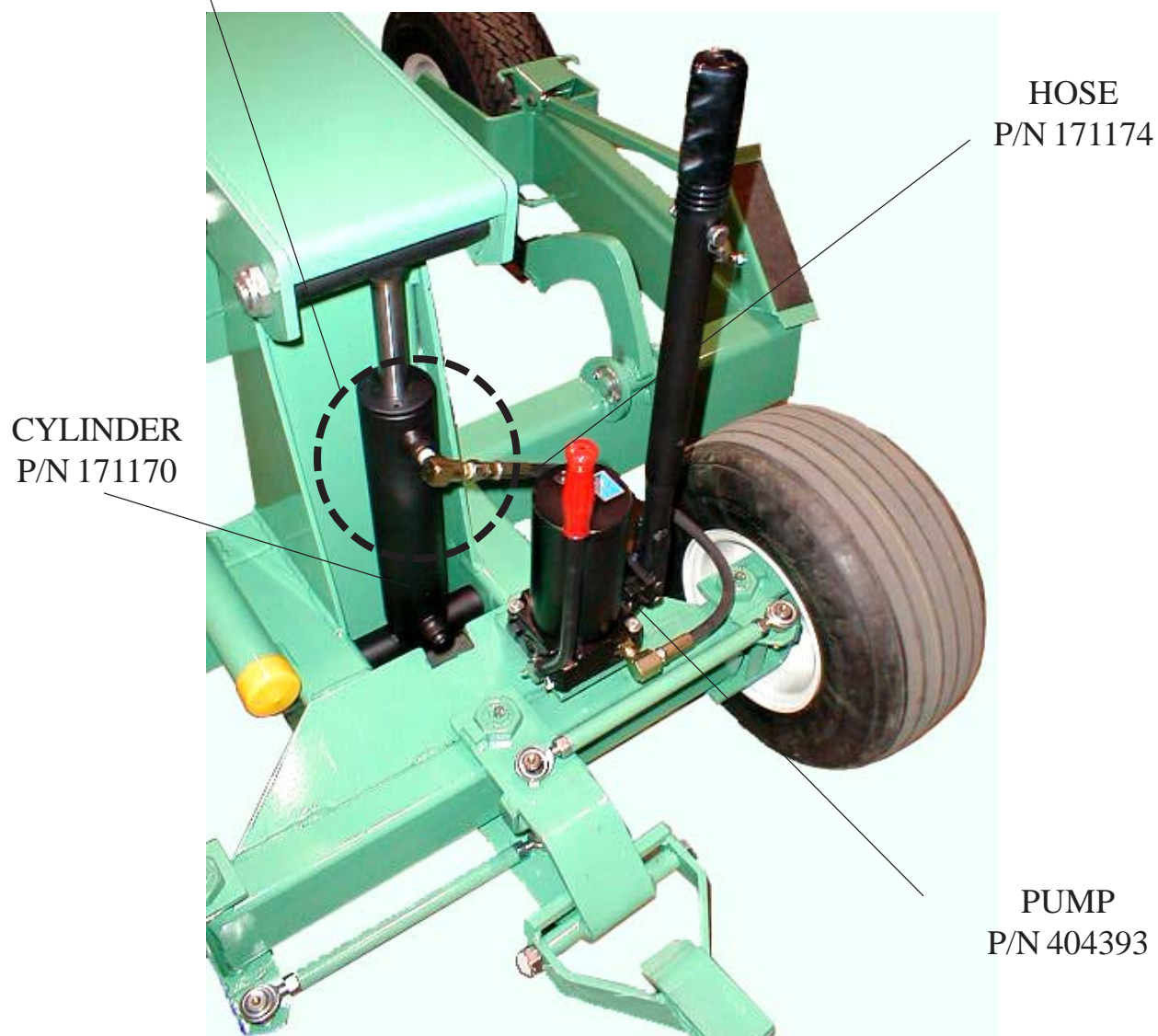
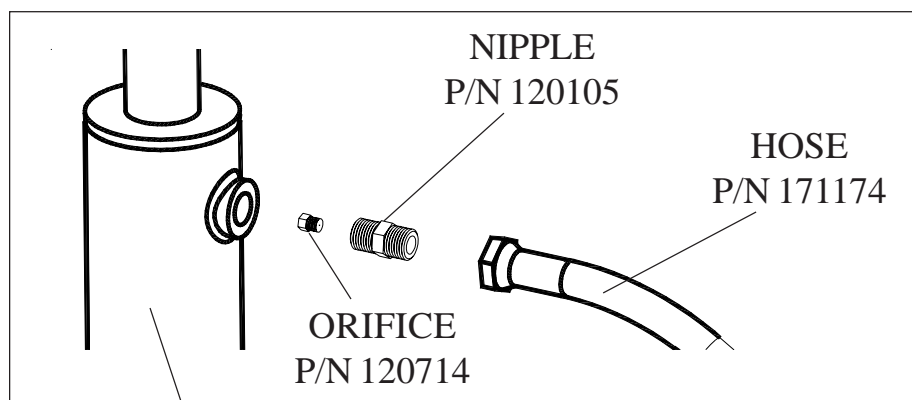
## Grease Points



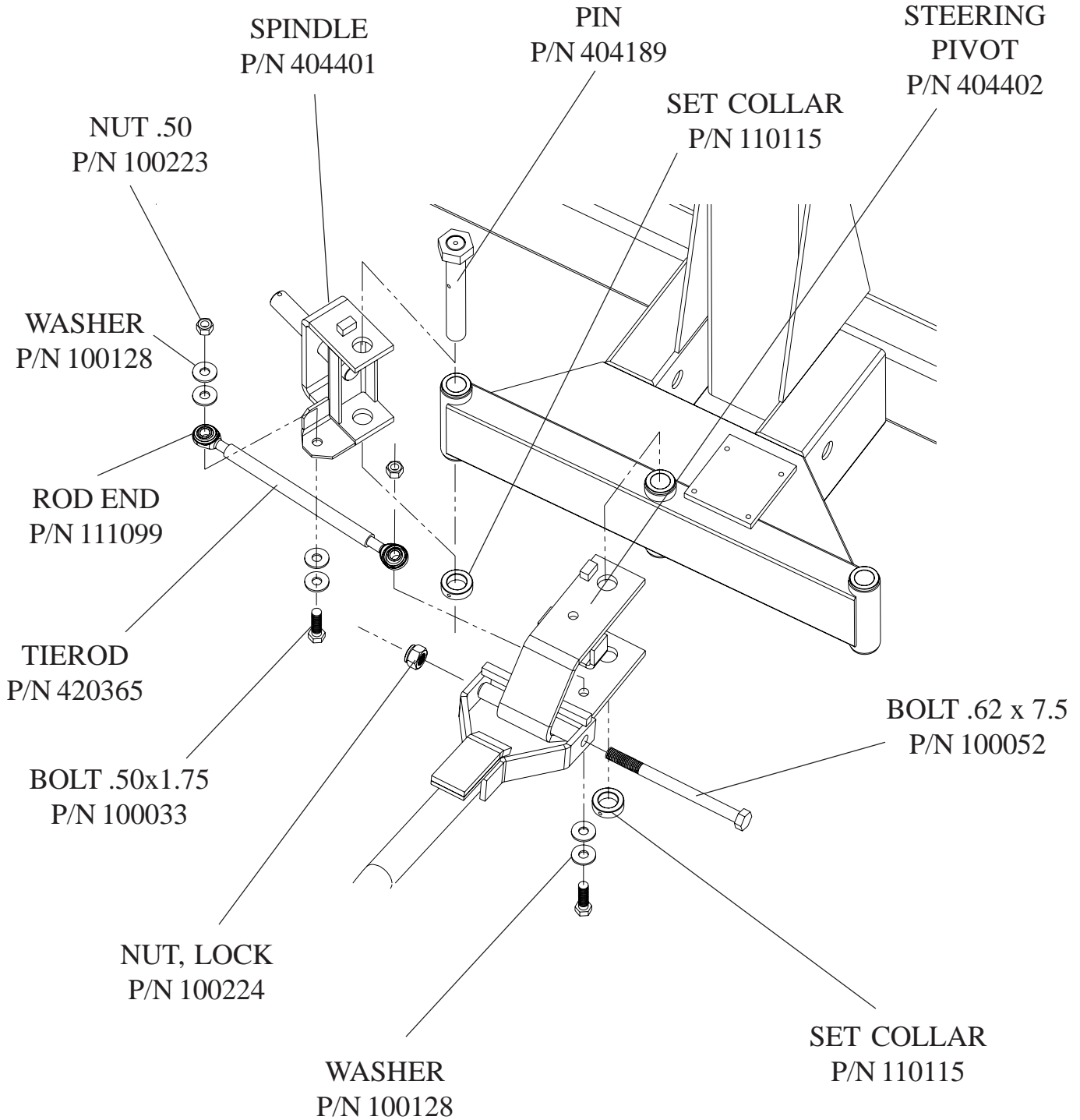
# Major Components



## Hydraulic Components



# Steering Assembly







This card must be filled out completely and mailed within ten (10) days from date equipment is delivered or warranty is null and void.

EQUIPMENT PURCHASED ..... SERIAL NO.....

DATE DELIVERED ..... NAME OF PURCHASER .....

ADDRESS ..... CITY ..... STATE ..... ZIP .....

PURCHASED FROM (DEALERS NAME) .....

ADDRESS ..... CITY ..... STATE .....

Was a copy of the owner's manual and operating instructions included with the above equipment? YES.....NO.....

Will the owner of the equipment provide instruction and copies of the owner's manual for all operators of the equipment?

YES.....NO.....

Was the equipment specified above, received in good condition? YES.....NO.....

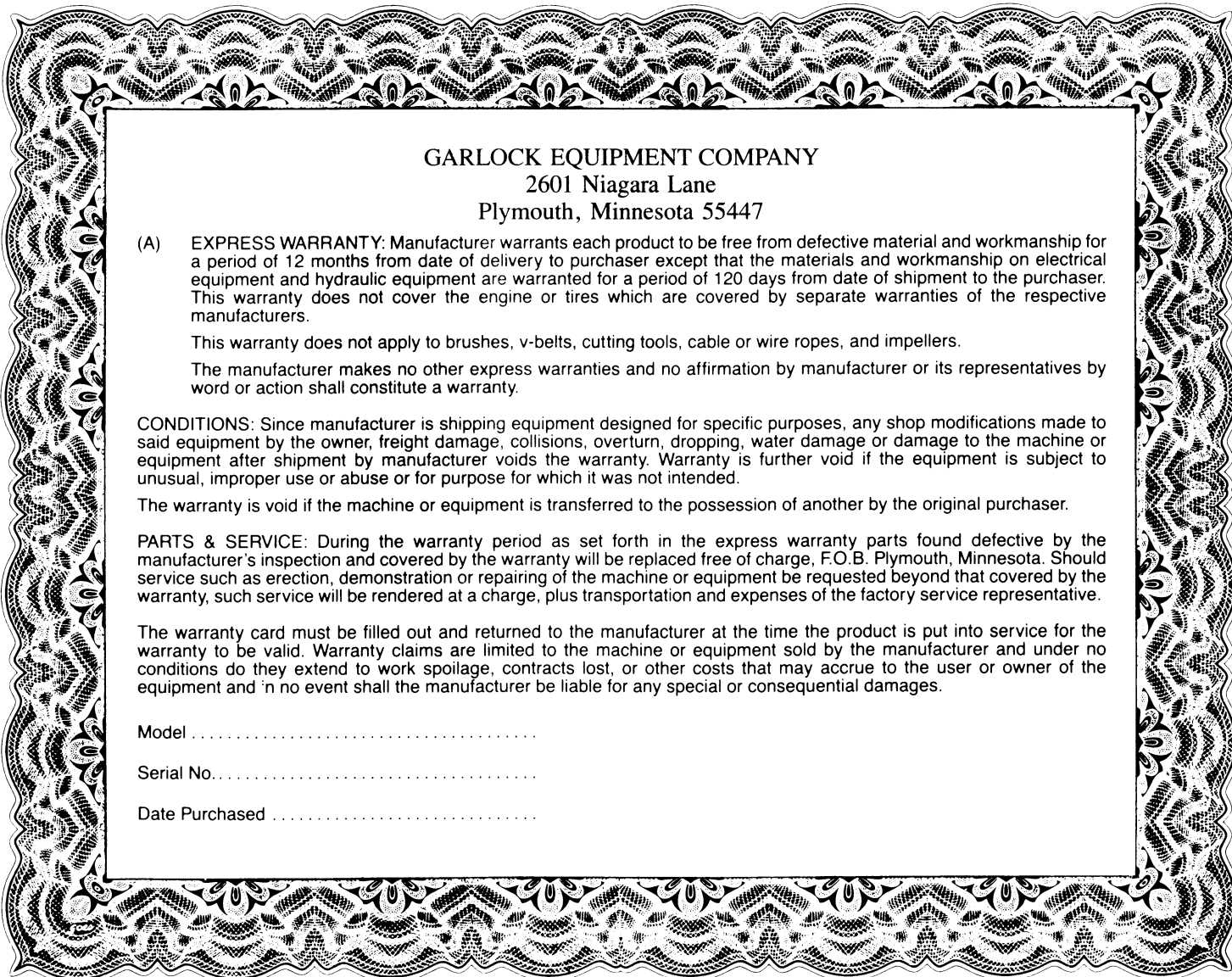
If there was some defect or damage to the equipment, please indicate the nature of the same .....

Please send product catalog

SIGNATURE OF PURCHASER.....

(If purchaser is a corporation, this card must be signed by corporate officer)

TEAR OFF AND RETAIN THIS PORTION FOR YOUR FILE



GARLOCK EQUIPMENT COMPANY

2601 Niagara Lane

Plymouth, Minnesota 55447

(A) EXPRESS WARRANTY: Manufacturer warrants each product to be free from defective material and workmanship for a period of 12 months from date of delivery to purchaser except that the materials and workmanship on electrical equipment and hydraulic equipment are warranted for a period of 120 days from date of shipment to the purchaser. This warranty does not cover the engine or tires which are covered by separate warranties of the respective manufacturers.

This warranty does not apply to brushes, v-belts, cutting tools, cable or wire ropes, and impellers.

The manufacturer makes no other express warranties and no affirmation by manufacturer or its representatives by word or action shall constitute a warranty.

CONDITIONS: Since manufacturer is shipping equipment designed for specific purposes, any shop modifications made to said equipment by the owner, freight damage, collisions, overturn, dropping, water damage or damage to the machine or equipment after shipment by manufacturer voids the warranty. Warranty is further void if the equipment is subject to unusual, improper use or abuse or for purpose for which it was not intended.

The warranty is void if the machine or equipment is transferred to the possession of another by the original purchaser.

PARTS & SERVICE: During the warranty period as set forth in the express warranty parts found defective by the manufacturer's inspection and covered by the warranty will be replaced free of charge, F.O.B. Plymouth, Minnesota. Should service such as erection, demonstration or repairing of the machine or equipment be requested beyond that covered by the warranty, such service will be rendered at a charge, plus transportation and expenses of the factory service representative.

The warranty card must be filled out and returned to the manufacturer at the time the product is put into service for the warranty to be valid. Warranty claims are limited to the machine or equipment sold by the manufacturer and under no conditions do they extend to work spoilage, contracts lost, or other costs that may accrue to the user or owner of the equipment and in no event shall the manufacturer be liable for any special or consequential damages.

Model .....

Serial No.....

Date Purchased .....

## Update your instructions and decals.

In the interest of your safety we feel it is important that all GARLOCK products in use, no matter how old, have up to date instructions and decals. The instructions as well as decals should stay with the product. Indicate below any GARLOCK product you have that does not have readable operation instructions and decals.

The following items are available free of charge for each unit:

- 1) Clamp-on instruction tube with tabs. You clamp it on to the appropriate place on the machine.
- 2) Operation instructions.
- 3) Set of current decals.

### WE CARE ABOUT SAFETY

-----  
Cut along line and return.

#### I care about safety too.

Please send me instruction tubes, current instruction manuals, or decals as indicated for the following Garlock quality products.

Name of Product	Decals	Instructions	Tubes

Indicate quantity of each item required.

Mail to:



\_\_\_\_\_  
Company

\_\_\_\_\_  
Street

\_\_\_\_\_  
City, State, Zip

\_\_\_\_\_  
Your Name



TM



**EQUIPMENT COMPANY**

2601 NIAGARA LANE, PLYMOUTH, MN 55447

Phone: (763) 553-1935

Fax (763) 553-7765