

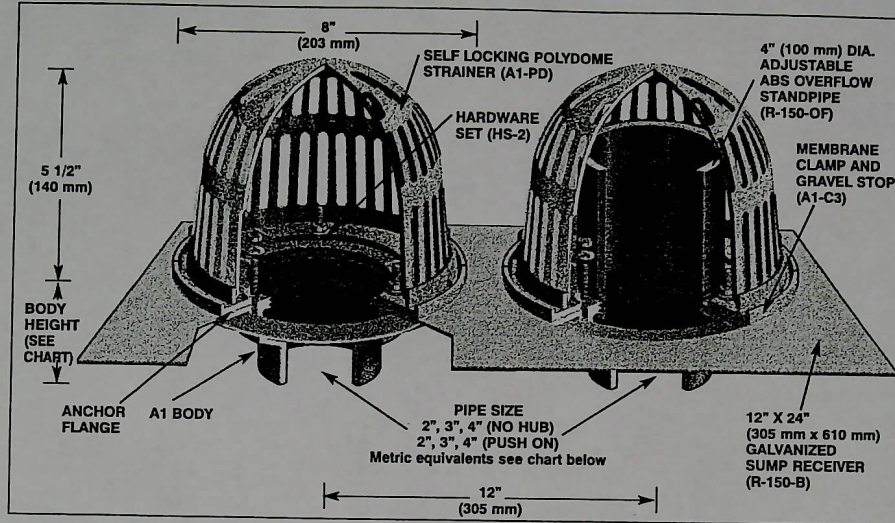


# R150 SERIES

## COMBINED SMALL SUMP ROOF DRAIN AND SECONDARY OVERFLOW SYSTEM

17340 Harper Avenue, Suite 701, Detroit, Michigan 48224 Tel: (905) 673-1343 Fax: (905) 673-7629 Toll Free: 1-800-465-2736  
 Internet address: www.mifab.com E-mail address: mail@mifab.com

**SPECIFICATION:** MIFAB Series R150 combined roof drain and secondary overflow system, consisting of 12" x 24" (305 mm x 610 mm) galvanized sump receiver; two lacquer coated cast iron small sump roof drain bodies with anchor flange, cast iron water proofing membrane clamp rings with integral gravel stops, and one 4" (100 mm) diameter ABS overflow standpipe and two self-locking polydome strainers.



PIPE SIZE	BODY HEIGHT NO HUB	PUSH ON
2" (50 mm)	2 3/4" (70 mm)	3 3/8" (86 mm)
3" (75 mm)	2 3/4" (70 mm)	3 3/8" (86 mm)
4" (100 mm)	2 3/4" (70 mm)	3 3/8" (86 mm)

Deck opening - 8 1/4" x 20 1/4" (210 mm x 514 mm)

**OPTIONS:**

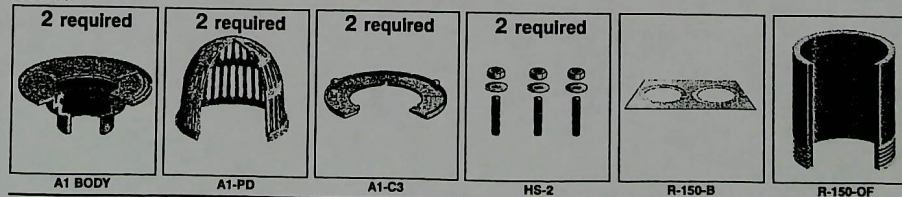
Vandal proof dome  
 Cast dome  
 Push-on outlet connection  
 Stainless steel ballast guard  
 Underdeck clamp

suffix "-L"  
 suffix "-M"  
 suffix "-P"  
 suffix "-SG"  
 suffix "-U"

Water proofing flange  
 3M corrosion resistant finish  
 Galvanized finish  
 Acid resistant epoxy coating

suffix "-W"  
 suffix "-3M"  
 suffix "-13"  
 suffix "-16"

**PARTS:**

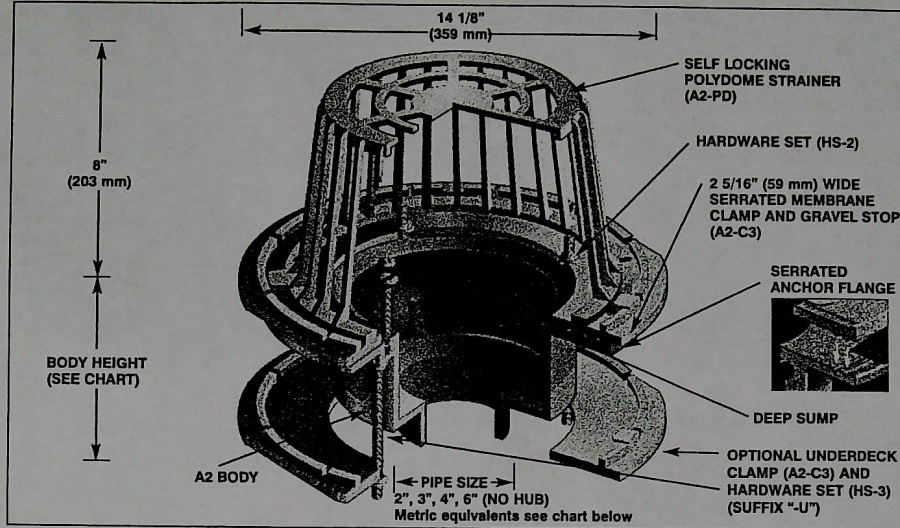




**R200 SERIES**  
**LARGE SUMP ROOF DRAIN**

17340 Harper Avenue, Suite 701, Detroit, Michigan 48224 Tel: (905) 673-1343 Fax: (905) 673-7629 Toll Free: 1-800-465-2736  
Internet address: www.mifab.com E-mail address: mail@mifab.com

**SPECIFICATION:** MIFAB Series R200 lacquer coated cast iron deep sump roof drain with anchor flange, large cast iron water proofing membrane clamp ring with integral gravel stop, and standard self-locking polydome strainer with a free area of 125 square inches (80,645 mm<sup>2</sup>).



PIPE SIZE	BODY HEIGHT NO HUB
2" (50 mm)	5 7/16" (138 mm)
3" (75 mm)	5 7/16" (138 mm)
4" (100 mm)	5 7/16" (138 mm)
6" (150 mm)	5 7/8" (149 mm)

Deck opening - 10" (254 mm)  
With sump receiver - 13 1/4" (359 mm)

**OPTIONS:**

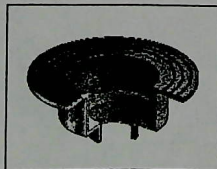
Sump receiver  
Adjustable extension flange  
Vandal proof dome  
Cast iron dome  
Water dam 2" high  
Stainless steel ballast guard  
Underdeck clamp

suffix "-B"  
suffix "-E"  
suffix "-L"  
suffix "-M"  
suffix "-R"  
suffix "-SG"  
suffix "-U"

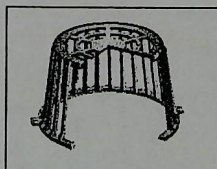
Water proofing flange  
Extended wide deck flange  
3M corrosion resistant finish  
Galvanized finish  
Acid resistant epoxy coating  
Accurflow (parabolic weir)  
Side outlet

suffix "-W"  
suffix "-Z"  
suffix "-3M"  
suffix "-13"  
suffix "-16"  
suffix "-16"  
specify "-F1", "-F2", "-F3"  
suffix "-90"

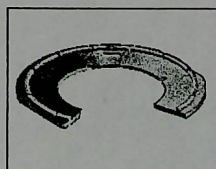
**PARTS:**



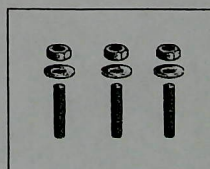
A2 BODY



A2-PD



A2-C3



HS-2

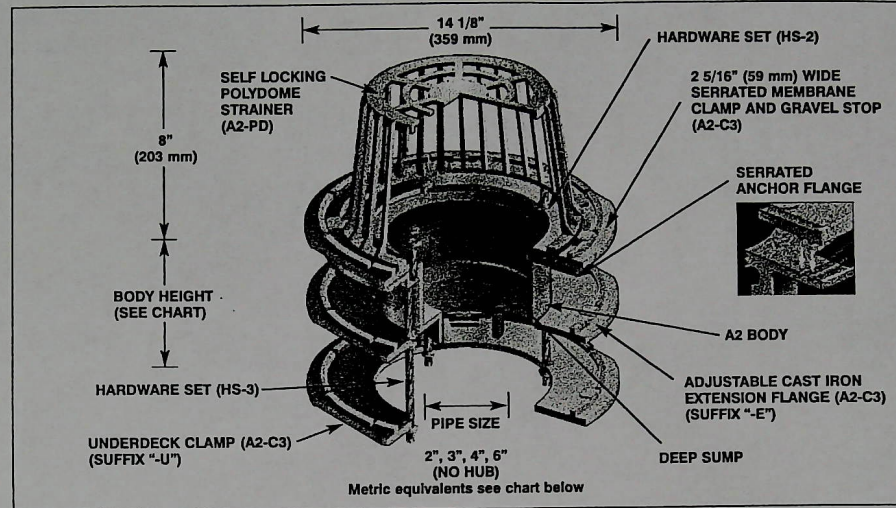


## R200-EU SERIES

### LARGE SUMP ROOF DRAIN FOR 1 3/4" TO 7" INSULATION

17340 Harper Avenue, Suite 701, Detroit, Michigan 48224 Tel: (905) 673-1343 Fax: (905) 673-7629 Toll Free: 1-800-465-2736  
Internet address: www.mifab.com E-mail address: mail@mifab.com

**SPECIFICATION:** MIFAB Series R200-EU lacquer coated cast iron deep sump roof drain with anchor flange, large cast iron water proofing membrane clamp ring with integral gravel stop, adjustable cast iron extension flange, underdeck clamp, and standard self-locking polydome strainer, with a free area of 125 square inches (80,645 mm<sup>2</sup>).



PIPE SIZE	BODY HEIGHT NO HUB
2" (50 mm)	5 7/16" (138 mm)
3" (75 mm)	5 7/16" (138 mm)
4" (100 mm)	5 7/16" (138 mm)
6" (150 mm)	5 7/8" (149 mm)

Deck opening - 10" (254 mm)  
With sump receiver - 13 1/4" (359 mm)

#### OPTIONS:

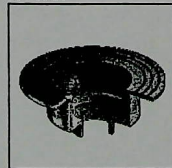
Sump receiver  
Ballast guard  
Vandal proof dome  
Cast dome  
Water dam 2" high  
Water proofing flange

suffix "-B"  
suffix "-BG"  
suffix "-L"  
suffix "-M"  
suffix "-R"  
suffix "-W"

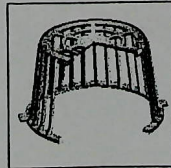
Extended wide deck flange  
3M corrosion resistant finish  
Galvanized finish  
Acid resistant epoxy coating  
Accuflow (parabolic weir)  
Side outlet

suffix "-Z"  
suffix "-3M"  
suffix "-13"  
suffix "-16"  
specify "-F1", "-F2", "-F3"  
suffix "-90"

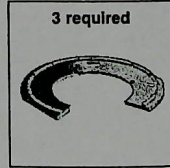
#### PARTS:



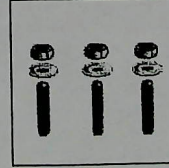
A2 BODY



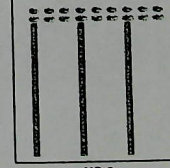
A2-PD



A2-C3



HS-2



HS-3

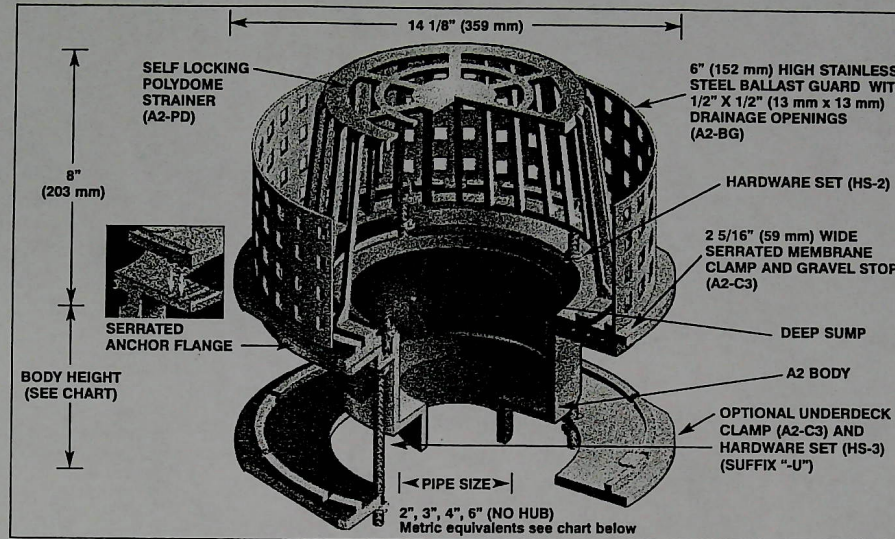


## R200-G SERIES

### LARGE SUMP I.R.M.A. ROOF DRAIN WITH STAINLESS STEEL 6" HIGH BALLAST GUARD

17340 Harper Avenue, Suite 701, Detroit, Michigan 48224 Tel: (905) 673-1343 Fax: (905) 673-7629 Toll Free: 1-800-465-2736  
 Internet address: www.mifab.com E-mail address: mail@mifab.com

**SPECIFICATION:** MIFAB Series R200-G lacquer coated cast iron deep sump roof drain with anchor flange, large cast iron water proofing membrane clamp ring with integral gravel stop, stainless steel perforated 6" (152 mm) high ballast guard with 1/2" x 1/2" (13 mm x 13 mm) drainage openings, and standard self-locking polydome strainer.



BODY HEIGHT	
PIPE SIZE	NO HUB
2" (50 mm)	5 7/16" (138 mm)
3" (75 mm)	5 7/16" (138 mm)
4" (100 mm)	5 7/16" (138 mm)
6" (150 mm)	5 7/8" (149 mm)

Deck opening - 10" (254 mm)  
 With sump receiver - 13 1/4" (359 mm)

**OPTIONS:**

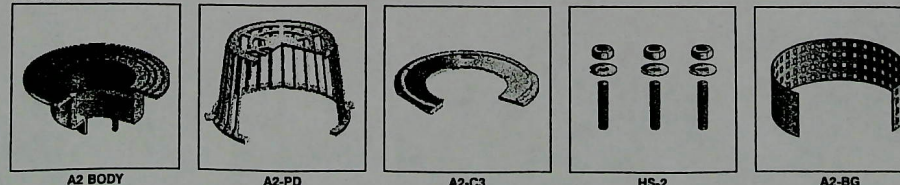
Sump receiver  
 Adjustable extension flange  
 Vandal proof dome  
 Cast dome  
 Underdeck clamp

suffix "-B"  
 suffix "-E"  
 suffix "-L"  
 suffix "-M"  
 suffix "-U"

Water proofing flange  
 Extended wide deck flange  
 3M corrosion resistant finish  
 Galvanized finish  
 Acid resistant epoxy coating  
 Side outlet

suffix "-W"  
 suffix "-Z"  
 suffix "-3M"  
 suffix "-13"  
 suffix "-16"  
 suffix "-90"

**PARTS:**





## R200-GC SERIES

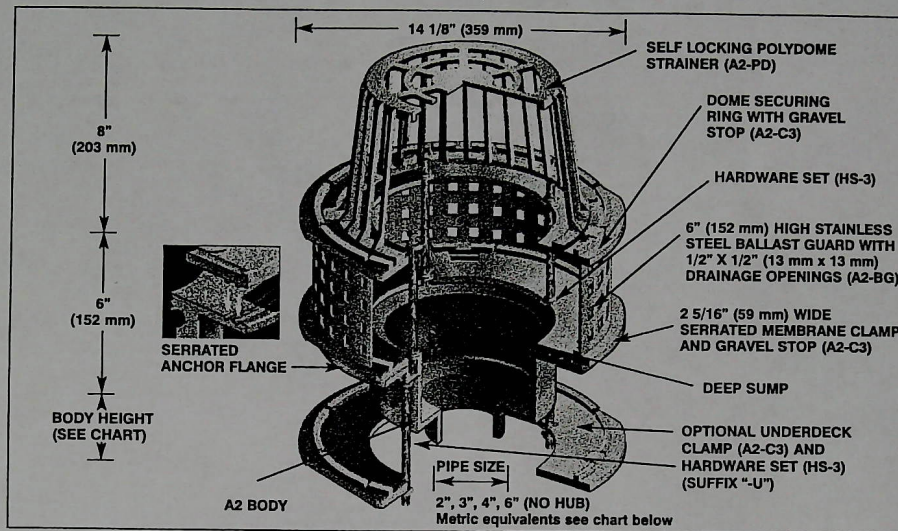
### LARGE SUMP I.R.M.A. ROOF DRAIN WITH STAINLESS STEEL 6" HIGH BALLAST GUARD WITH SECURING RING

17340 Harper Avenue, Suite 701, Detroit, Michigan 48224 Tel: (905) 673-1343 Fax: (905) 673-7629 Toll Free: 1-800-465-2736

Internet address: [www.mifab.com](http://www.mifab.com)

E-mail address: [mail@mifab.com](mailto:mail@mifab.com)

**SPECIFICATION:** MIFAB Series R200-GC lacquer coated cast iron deep sump roof drain with anchor flange, large cast iron water proofing membrane clamp ring with integral gravel stop, stainless steel non-fouling 6" (152 mm) high ballast guard with 1/2" x 1/2" (13 mm x 13 mm) drainage openings, dome securing ring with gravel stop, and standard self-locking polydome dome strainer with a free area of 125 square inches (80,645 mm<sup>2</sup>).



PIPE SIZE	BODY HEIGHT NO HUB
2" (50 mm)	5 7/16" (138 mm)
3" (75 mm)	5 7/16" (138 mm)
4" (100 mm)	5 7/16" (138 mm)
6" (150 mm)	5 7/8" (149 mm)

Deck opening - 10" (254 mm)  
With sump receiver - 13 1/4" (359 mm)

#### OPTIONS:

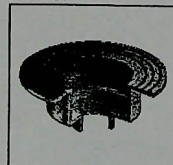
Sump receiver  
Adjustable extension flange  
Vandal proof dome  
Cast dome  
Underdeck clamp  
Water proofing flange

suffix "-B"  
suffix "-E"  
suffix "-L"  
suffix "-M"  
suffix "-U"  
suffix "-W"

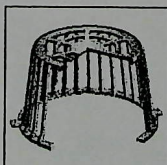
Extended wide deck flange  
3M corrosion resistant finish  
Galvanized finish  
Acid resistant epoxy coating  
Accuflow (parabolic weir)  
Side outlet

suffix "-Z"  
suffix "-3M"  
suffix "-13"  
suffix "-16"  
specify "-F1", "-F2", "-F3"  
suffix "-90"

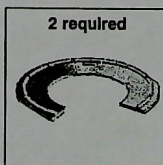
#### PARTS:



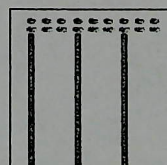
A2 BODY



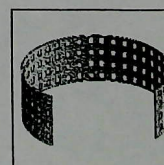
A2-PD



A2-C3



HS-3



A2-BG



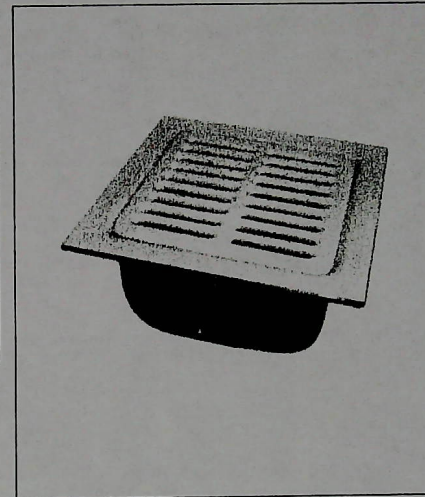
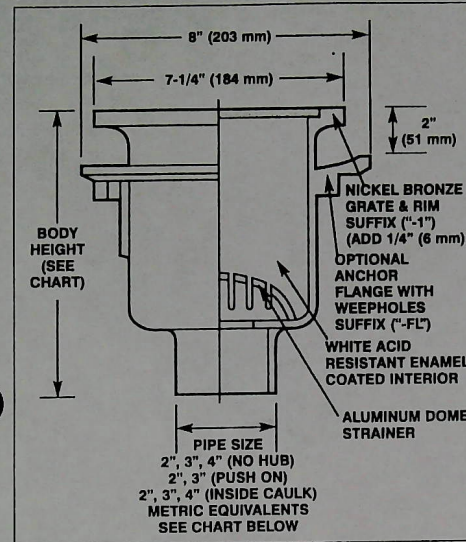


## FS-520 SERIES

8" x 8" SQUARE FLOOR AREA AND  
INDIRECT SANITARY WASTE DRAINS

17340 Harper Avenue, Suite 701, Detroit, Michigan 48224 Tel: (905) 673-1343 Fax: (905) 673-7629 Toll Free: 1-800-465-2736  
Internet address: www.mifab.com E-mail address: mail@mifab.com

**SPECIFICATION:** MIFAB Series FS-520 8" x 8" x 6" (203 mm x 203 mm x 153 mm) square cast iron sanitary floor area and indirect waste drain complete with white acid resistant enamel coated interior, loose set acid resistant enamel coated cast iron grate and aluminum dome bottom strainer.



MODEL NO.	DESCRIPTION	PIPE SIZE	BODY HEIGHT NO HUB	PUSH ON	INSIDE CAULK
FS-520	8" x 8" x 6" (203 mm x 203 mm x 153 mm)	2", 3", 4" (50 mm, 75 mm, 100 mm)	8 5/8" (219 mm)	9 1/8" (232 mm)	8 5/8" (219 mm)

### OPTIONS:

Round 4" nickel bronze funnel  
Oval 4" x 9" nickel bronze funnel  
Anchor flange  
Anchor flange and membrane clamp  
Push on outlet  
Inside caulk outlet  
Nickel bronze rim and grate  
Stainless steel rim and grate

suffix "-F-1"  
suffix "-G-1"  
suffix "-FL"  
suffix "-FLC"  
suffix "P"  
suffix "X"  
suffix "-1"  
suffix "-3"

Sediment bucket  
Vandal proof (with option "-1" and "-3" only)  
Trap seal primer tapping  
Galvanized  
Less grate  
1/2" grate  
3/4" grate

suffix "-5"  
suffix "-6"  
suffix "-7"  
suffix "-13"  
suffix "-22"  
suffix "-150"  
suffix "-175"



## FS-700 SERIES

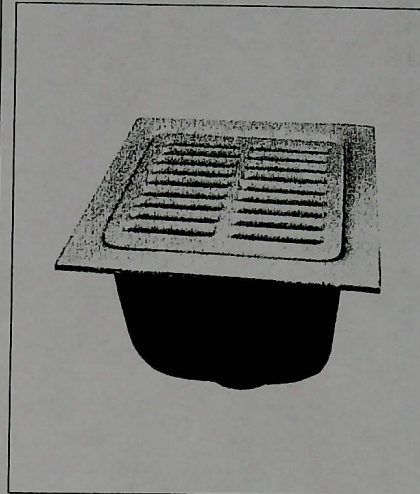
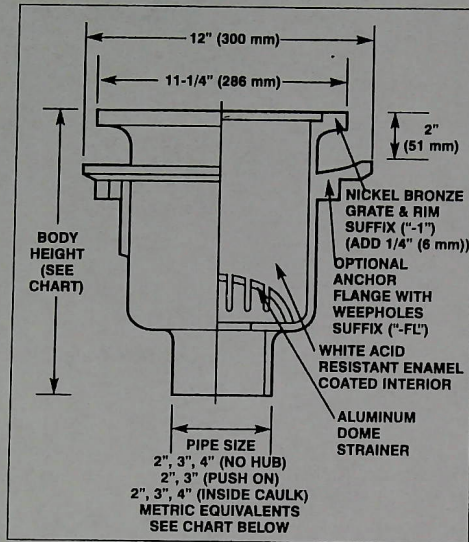
### 12" x 12" SQUARE FLOOR AREA AND INDIRECT SANITARY WASTE DRAINS

17340 Harper Avenue, Suite 701, Detroit, Michigan 48224 Tel: (905) 673-1343 Fax: (905) 673-7629 Toll Free: 1-800-465-2736

Internet address: www.mifab.com

E-mail address: mail@mifab.com

**SPECIFICATION:** MIFAB Series FS-700 12" x 12" (300 mm x 300 mm) x (specify depth) square cast iron sanitary floor area and indirect waste drain complete with white acid resistant enamel coated interior, loose set acid resistant enamel coated cast iron grate and aluminum dome bottom strainer.



MODEL NO.	DESCRIPTION	PIPE SIZE	BODY HEIGHT		
			NO HUB	PUSH ON	INSIDE CAULK
FS-720	12" x 12" x 6" (300 mm x 300 mm x 150 mm)	2", 3", 4" (50 mm, 75 mm, 100 mm)	8 5/8" (219 mm)	9 1/8" (232 mm)	8 5/8" (219 mm)
FS-730	12" x 12" x 8" (300 mm x 300 mm x 200 mm)	2", 3", 4" (50 mm, 75 mm, 100 mm)	10 7/8" (276 mm)	11 3/8" (289 mm)	10 7/8" (276 mm)
FS-740	12" x 12" x 10" (300 mm x 300 mm x 250 mm)	2", 3", 4" (50 mm, 75 mm, 100 mm)	12 5/8" (321 mm)	13 1/8" (334 mm)	12 5/8" (321 mm)

#### OPTIONS:

Round 4" nickel bronze funnel  
Oval 4" x 9" nickel bronze funnel  
Anchor flange  
Anchor flange and membrane clamp  
Push on outlet  
Inside caulk outlet  
Nickel bronze rim and grate  
Stainless steel rim and grate

suffix "-F-1"  
suffix "-G-1"  
suffix "-FL"  
suffix "-FLC"  
suffix "P"  
suffix "X"  
suffix "-1"  
suffix "-3"

Sediment bucket  
Vandal proof (with option "-1" and "-3" only)  
Trap seal primer tapping  
Galvanized  
Less grate  
1/2" grate  
3/4" grate

suffix "-5"  
suffix "-6"  
suffix "-7"  
suffix "-13"  
suffix "-22"  
suffix "-150"  
suffix "-175"



### F340 Series

Model #	F340 Floor drain with 12" round, heavy duty grate		Lacquered cast iron body with:			
	WT	Strainer	No hub	Ductile Iron	Nickel bronze	Stainless Steel
	Lbs.	Description	outlet size	(-4)	(-1)	(-3)
F342,3,4,6	24.00	12" Dia. Adj. tractor grate	2", 3", 4", 6"	\$ 480.00	\$ 658.00	\$ 658.00
F342,3,4,6-1-	24.00	12" Dia. Adj. flat grate	2", 3", 4", 6"	\$ 361.00	\$ 537.00	\$ 537.00
F342,3,4,6-Y	24.00	12" Dia. Non-Adj. tractor grate	2", 3", 4", 6"	\$ 332.00	\$ 510.00	\$ 510.00
F342,3,4,6-Y	24.00	12" Dia. Non-Adj. flat grate	2", 3", 4", 6"	\$ 311.00	\$ 494.00	\$ 494.00

F340C - when a membrane clamp is required,  
add suffix (-C) (part number) (No add)

Deduct for:

(-Q) \$54.00 (Shallow body)

### F360 Series

Model #	F360 Floor drain with 15" round, heavy duty grate		Lacquered cast iron body with:			
	WT	Strainer	No hub	Ductile Iron	Nickel bronze	Stainless Steel
	Lbs.	Description	outlet size	(-4)	(-1)	(-3)
F362,3,4,6	30.00	15" Dia. Adj. tractor grate	2", 3", 4", 6"	\$ 698.00	\$ 1,012.00	\$ 1,012.00
F362,3,4,6-Y	30.00	15" Dia. Non-Adj. tractor grate	2", 3", 4", 6"	\$ 668.00	\$ 982.00	\$ 982.00
F362,3,4,6-Y	30.00	15" Dia. Non-Adj. flat grate	2", 3", 4", 6"	\$ 587.00	\$ 901.00	\$ 901.00

F360C - when a membrane clamp is required,  
add suffix (-C) (part number) (No add)

Deduct for:

(-Q) \$132.00 (Shallow body)

List Price Options for the F340 and F360 Series		F340 Series	F360 Series
-3M	3M epoxy finish	\$ 183.00	\$ 225.00
-5	Sediment bucket	\$ 57.00	\$ 57.00
-6	Vandal proof	\$ 36.00	\$ 36.00
-7	Trap seal primer tapping	\$ 37.00	\$ 37.00
-8	Backwater valve	\$ 92.00	\$ 92.00
-11	Acid resistant epoxy coating	P.O.A.	P.O.A.
-13	Galvanized cast iron	\$ 122.00	\$ 285.00
-15	Extension	\$ 46.00	\$ 46.00
-16	Square top	see F440 and F460 -40 and F460 Series	
-18	Dome grate	\$ 33.00	\$ 33.00
-21	Secondary strainer	\$ 22.00	\$ 22.00
-34	Closure plug	\$ 88.50	\$ 88.50
-40	Underdeck clamp	\$ 59.00	\$ 59.00
-41	Sump receiver	\$ 66.00	\$ 66.00
-90	No hub side outlet	\$ 88.00	\$ 88.00
P	Push on outlet	\$ 14.00	\$ 14.00
T	Threaded outlet	\$ 19.00	\$ 19.00
X	Inside caulk outlet	No Add	No Add
-Z	Extended wide elastomer	\$ 139.50	\$ 139.50
-F4-1	4" NB round funnel	\$ 103.00	\$ 103.00
-F4-2	4" PB round funnel	\$ 87.00	\$ 87.00
-F4-50	4" cast iron round funnel	\$ 42.00	\$ 42.00
-G-1	4" x 9" NB oval funnel	\$ 213.00	\$ 213.00
-G-2	4" x 9" PB oval funnel	\$ 197.50	\$ 197.50
-G-50	4" x 9" cast iron oval funnel	\$ 118.00	\$ 118.00
-J-1	6" x 3" x 1" NB oval funnel	\$ 103.00	\$ 103.00
-J-2	6" x 3" x 1" PB oval funnel	\$ 88.00	\$ 88.00
-J-50	6" x 3" x 1" cast iron oval funnel	\$ 42.00	\$ 42.00

## F420 Series

Model #	F420 Floor drain with 8" square, heavy duty grate		Lacquered cast iron body with:			
	WT	Strainer	No hub	Ductile Iron	Nickel bronze	Stainless Steel
	Lbs.	Description	outlet size	(-4)	(-1)	(-3)
F422,3,4	14.00	8" Sq. Adj. tractor grate	2", 3", 4"	\$ 256.00	\$ 394.00	\$ 394.00
F422,3,4-Y	14.00	8" Sq. Non-Adj. tractor grate	2", 3", 4"	\$ 235.00	\$ 387.00	\$ 387.00
F422,3,4-Y-1	14.00	8" Sq. Non-Adj. flat grate	2", 3", 4"	\$ 216.00	\$ 328.00	\$ 328.00

F420C - when a membrane clamp is required,  
add suffix (-C) (part number A1-C1) (No Add)

### List Price Options for the F420 Series

-3M	3M epoxy finish	\$ 124.75
-5	Sediment bucket	\$ 33.50
-6	Vandal proof	\$ 31.00
-7	Trap seal primer tapping	\$ 37.00
-8	Backwater valve	\$ 92.00
-11	Acid resistant epoxy coating	\$ 41.50
-13	Galvanized cast iron	\$ 91.00
-15	Extension	\$ 33.00
-18	Dome grate	\$ 10.00
-21	Secondary strainer	\$ 22.00
-34	Closure plug	\$ 88.50
-40	Underdeck clamp	\$ 37.00
-41	Sump receiver	\$ 61.75
-90	No hub side outlet	\$ 53.75
P	Push on outlet	\$ 14.00
T	Threaded outlet	\$ 19.00
X	Inside caulk outlet	No Add
-Z	Extended wide flange	\$ 139.50
-F4-1	4" NB round funnel	\$ 103.00
-F4-2	4" PB round funnel	\$ 87.00
-F4-50	4" cast iron round funnel	\$ 42.00
-G-1	4" x 9" NB oval funnel	\$ 213.00
-G-2	4" x 9" PB oval funnel	\$ 197.50
-G-50	4" x 9" cast iron oval funnel	\$ 118.00
-J-1	6" x 3" x 1" NB oval funnel	\$ 103.00
-J-2	6" x 3" x 1" PB oval funnel	\$ 88.00
-J-50	6" x 3" x 1" cast iron oval funnel	\$ 42.00

## F440 Series

Model #	F440 Floor drain with 12" square, heavy duty grate		Lacquered cast iron body with:			
	WT	Strainer	No hub	Ductile Iron	Nickel bronze	Stainless Steel
	Lbs.	Description	outlet size	(-4)	(-1)	(-3)
F442,3,4,6	26.00	12" Sq. Adj. tractor grate	2", 3", 4", 6"	\$ 523.00	\$ 733.00	\$ 733.00
F442,3,4,6-1	26.00	12" Sq. Adj. flat grate	2", 3", 4", 6"	\$ 401.00	\$ 639.00	\$ 639.00
F442,3,4,6-Y	26.00	12" Sq. Non-Adj. tractor grate	2", 3", 4", 6"	\$ 363.00	\$ 577.00	\$ 577.00
F442,3,4,6-Y	26.00	12" Sq. Non-Adj. flat grate	2", 3", 4", 6"	\$ 324.00	\$ 593.00	\$ 593.00

F440C - when a membrane clamp is required,  
add suffix (-C) (part number ) (No add)

Deduct for:

(-Q) \$54.00 (Shallow body)

## F460 Series

F460 Model #	WT Lbs.	Strainer Description	Lacquered Cast Iron Body with:			
			No-Hub Outlet Size	Ductile Iron (-4)	Nickel bronze (-1)	Stainless Steel (-3)
F462,3,4,6	?	15" Sq. Adj. tractor grate	2", 3", 4", 6"	\$ 615.50	\$ 970.50	\$ 970.50
F462,3,4,6-1	?	15" Sq. Adj. Flat grate	2", 3", 4", 6"	\$ 615.50	\$ 970.50	\$ 970.50
F462,3,4,6-Y	?	15" Sq. Non-Adj. tractor grt	2", 3", 4", 6"	\$ 590.00	\$ 934.50	\$ 934.50

F460C - when a membrane clamp is required,  
add suffix (-C) (part number) (No add)

Deduct for:  
(-Q) \$44.00 (Shallow body)

## F870-P Series

F870-P Series Model #	WT Lbs.	Standpipe Diameter	No-Hub Outlet Size	Lacquered Cast Iron Body with:	
				ABS standpipe with Lacquered Cast Iron Dome (-50)	Stainless Steel (-3)
F872,3,4C-P	7.25	4"	2", 3", 4"	\$ 564.00	\$ 605.00

F870-P when no membrane clamp is required,  
delete suffix (-C) (part number A1-C1) and deduct \$22.00 from the List Price.

## List Price Options for the F440, F460 and F870-P Series

		F440 Series	F460 Series
-3M	All acid resistant epoxy 3m finish	\$ 183.00	\$ 225.00
-5	Sediment bucket	\$ 57.00	\$ 57.00
-6	Vandal proof	\$ 36.00	\$ 36.00
-7	Trap primer connection	\$ 37.00	\$ 37.00
-8	Backwater valve	\$ 92.00	\$ 92.00
-11	Epoxy coated cast iron	P.O.A.	P.O.A.
-13	Galvanized cast iron	\$ 122.00	\$ 285.00
-15	Extension	\$ 46.00	\$ 46.00
-18	Dome grate	\$ 33.00	\$ 33.00
-21	Secondary strainer	\$ 22.00	\$ 22.00
-34	Closure plug	\$ 88.50	\$ 88.50
-40	Underdeck clamp	\$ 59.00	\$ 59.00
-41	Sump receiver	\$ 66.00	\$ 66.00
-90	Side outlet	\$ 88.00	\$ 88.00
P	Push on outlet	\$ 14.00	\$ 14.00
T	Threaded Connection	\$ 19.00	\$ 19.00
X	Inside Caulk Connection	No Add	No Add
-Z	Extended wide flange	\$ 139.50	\$ 139.50
-F4-1	4" NB round funnel	\$ 103.00	\$ 103.00
-F4-2	4" PB round funnel	\$ 87.00	\$ 87.00
-F4-50	4" cast iron round funnel	\$ 42.00	\$ 42.00
-G-1	4" x 9" NB oval funnel	\$ 213.00	\$ 213.00
-G-2	4" x 9" PB oval funnel	\$ 197.50	\$ 197.50
-G-50	4" x 9" cast iron oval funnel	\$ 118.00	\$ 118.00

### FS-500 Series

FS-520 8" x 8" x 6" Floor Sink			A.R.E. cast iron body with:			
Model #	WT Lbs.	Description	No hub Outlet Size	A.R.E.	Nickel Bronze (-1)	Stainless Steel (-3)
FS-522,3,4	5.00	8" x 8" x 6" deep	2", 3", 4"	\$ 385.00	\$ 490.00	\$ 605.00

#### List Price Options for the FS-500 Series

-FL	Anchor flange	\$ 45.00	\$ 45.00	\$ 45.00
-FLC	Anchor flange and membrane clamp	\$ 81.50	\$ 81.50	\$ 81.50
-5	White A.R.E. sediment bucket	\$ 48.50	\$ 48.50	\$ 48.50
-6	Vandal proof	\$ 18.50	\$ 18.50	\$ 18.50
-7	Trap seal primer tapping	\$ 46.00	\$ 46.00	\$ 46.00
-22	Less grate (deduct)	-\$ 46.50	\$ 74.00	\$ 74.00
-150	Half grate	No add	No add	No add
-175	3/4 grate	No add	No add	No add
-F4	4" round funnel	\$ 92.00	\$ 103.00	\$ 103.00
-G	4" x 9" oval funnel	\$ 129.50	\$ 216.00	\$ 216.00
-F6	6" round funnel	\$ 119.50	\$ 153.00	\$ 153.00
-J	6" x 3" x 1" oval funnel	\$ 92.00	\$ 103.00	\$ 103.00
P	Push on outlet	\$ 14.00	\$ 14.00	\$ 14.00
X	Inside caulk outlet	No add	No add	No add

### FS-700 Series

FS-720 12" x 12" x 6" Floor Sink			A.R.E. cast iron body with:			
Model #	WT Lbs.	Description	No hub Outlet Size	A.R.E.	Nickel Bronze (-1)	Stainless Steel (-3)
FS-722,3,4	8.00	12" x 12" x 6" deep	2", 3", 4"	\$ 518.00	\$ 702.00	738

FS-730 12" x 12" x 8" Floor Sink			A.R.E. cast iron body with:			
Model #	WT Lbs.	Description	No hub Outlet Size	A.R.E.	Nickel Bronze (-1)	Stainless Steel (-3)
FS-732,3,4	8.75	12" x 12" x 8" deep	2", 3", 4"	\$ 545.00	\$ 729.00	765

FS-740 12" x 12" x 10" Floor Sink			A.R.E. cast iron body with:			
Model #	WT Lbs.	Description	No hub Outlet Size	A.R.E.	Nickel Bronze (-1)	Stainless Steel (-3)
FS-742,3,4	9.50	12" x 12" x 10" deep	2", 3", 4"	\$ 575.00	\$ 760.00	775

#### List Price Options for the FS-700 Series

-FL	Anchor flange	\$ 94.00	\$ 94.00	\$ 94.00
-FLC	Anchor flange and membrane clamp	\$ 141.00	\$ 141.00	\$ 141.00
-5	White A.R.E. sediment bucket	\$ 76.00	\$ 76.00	\$ 76.00
-6	Vandal proof	\$ 18.50	\$ 18.50	\$ 18.50
-7	Trap seal primer tapping	\$ 46.00	\$ 46.00	\$ 46.00
-22	Less grate (deduct)	\$ 55.00	\$ 120.00	\$ 120.00
-150	Half grate	No add	No add	No add
-175	3/4 grate	No add	No add	No add
-F4	4" round funnel	\$ 92.00	\$ 103.00	\$ 103.00
-G	4" x 9" oval funnel	\$ 129.50	\$ 216.00	\$ 216.00
-F6	6" round funnel	\$ 119.50	\$ 153.00	\$ 153.00
-J	6" x 3" x 1" oval funnel	\$ 92.00	\$ 103.00	\$ 103.00
P	Push on outlet	\$ 14.00	\$ 14.00	\$ 14.00
X	Inside caulk outlet	No add	No add	No add

## Trench Drain List Price Sheet

### T100 Series

#### 6" x 24" trench drain grate

Model Number	Size	Grate Material	Frame Material	List Price
T100-3	6" x 24" module	Stainless Steel	None	\$ 225.00
T100-4	6" x 24" module	Ductile iron	None	\$ 87.00
T100-4-3	6" x 24" module	Ductile iron, stainless steel veneer	None	\$ 225.00
T100-F-3	6" x 24" module	Stainless Steel	Stainless Steel	\$ 300.00
T100-F-4	6" x 24" module	Ductile iron	Steel	\$ 112.00
T100-F-4-3	6" x 24" module	Ductile iron, stainless steel veneer	Stainless Steel	\$ 300.00

#### T100 Series Optional Variations

		List Price
-3M	3M epoxy finish	\$ 123.00
-6	Vandal proof	\$ 57.00
-13	All galvanized	\$ 123.00

### T120-FL Series

#### 6" x 24" trench drain grate with frame

Model Number	Size	Grate Material	Frame Material	Price Per Foot
T120-FL-3	24" long module	Stainless steel body and grate	Stainless Steel	\$750.00 / foot
T120-FL-4	24" long module	Epoxy coated steel body with ductile iron grate	Cold Rolled Steel	\$254.00 / foot
T120-FL-4-3	24" long module	Epoxy coated steel body with ductile iron grate and stainless steel frame and grate veneer	Stainless Steel	\$572.00 / foot

MIFAB ships one piece T120-FL Series trench drains up to 10 feet long.  
Over 10 feet, shipment is in multiples of ten feet. Specify number and location of outlets.  
One outlet recommended for each 10 foot section or less.

#### T120 Series Optional Variations

		List Price
-5	Sediment bucket (per outlet section)	\$ 71.00
-6	Vandal proof grate (per section)	\$ 42.00
-3M	3M epoxy finish	\$ 126.00
-8	Backwater valve	\$ 92.00
-13	All galvanized (per section)	\$ 66.00
-20	Dome outlet strainer	\$ 69.00
-38	Solids retainer baffle	\$ 69.00
-FL	Anchor flange	No Add
-C	Membrane clamp (per section)	\$ 37.00
P	Push on outlet	\$ 14.00
-S	End side outlet	\$ 70.00
T	Threaded outlet	No Add
X	Inside caulk outlet	No Add

### T150 Series

#### 12" x 12" trench drain grate

Model Number	Size	Grate Material	Frame Material	List Price
T150-4	12" x 12" module	Ductile iron	None	\$ 88.00
T150-4-3	12" x 12" module	Ductile iron grate with a Stainless steel veneer	None	\$ 418.00
T150-F-4	12" x 12" module	Ductile iron	Steel	\$ 137.50
T150-F-4-3	12" x 12" module	Ductile iron, Stainless steel veneer	Stainless steel	\$ 515.00
T150-F-4-2	12" x 12" module	Ductile iron	Steel	\$ 275.00
T150-F-4-3-2	12" x 12" module	Ductile iron, Stainless steel veneer	Stainless Steel	\$ 1,030.00

#### T150 Series Optional Variations

		List Price
-3M	3M epoxy finish	\$ 123.00
-6	Vandal proof	\$ 57.00
-13	All galvanized	\$ 123.00

### T175-FL Series

12" wide trench drain grate, frame and body assembly

Model Number	Size	Grate Material	Frame Material	Price Per Foot
T175-FL-3	12" wide module	Stainless steel body and grate	Steel	\$1,000.00 / foot
T175-FL-4	12" wide module	Epoxy coated steel body with ductile iron grate	Steel	\$479.00 / foot
T175-FL-4-3	12" wide module	Epoxy coated steel body with ductile iron grate and stainless steel frame and grate veneer	Stainless Steel	\$750.00 / foot

Up to five extension sections may be used with outlet section. For trenches over 22', use additional outlets.  
Specify number and location of outlet sections.

T175 Series Optional Variations		List Price
-5	Sediment bucket (per outlet section)	\$ 138.00
-6	Vandal proof grate (per section)	\$ 57.00
-3M	3M epoxy finish	\$ 186.00
-8	Backwater valve	\$ 92.00
-13	All galvanized (per section)	\$ 138.00
-20	Dome outlet strainer	\$ 69.00
-38	Solids retainer baffle	\$ 69.00
-FL	Anchor flange	No Add
-C	Membrane clamp (per section)	\$ 37.00
P	Push on outlet	\$ 14.00
-S	End side outlet	\$ 93.00
T	Threaded outlet	No Add
X	Inside caulk outlet	No Add

### T200 Series

12" x 24" trench drain grate

Model Number	Size	Grate Material	Frame Material	List Price	24" Extension
T200	12" x 24" module	Cast iron	None	\$ 147.50	N/A
T200-3	12" x 24" module	Cast iron grate with a Stainless steel veneer	None	\$ 700.00	N/A
T200-4	12" x 24" module	Ductile iron	None	\$ 404.00	N/A
T200-4-3	12" x 24" module	Ductile iron grate with a Stainless steel veneer	None	\$ 956.00	N/A
T200-F	12" x 24" module	Cast iron	Steel	\$ 400.00	\$ 216.00
T200-F-3	12" x 24" module	Cast iron, Stainless steel veneer	Stainless steel	\$ 1,197.00	\$ 835.00
T200-F-4	12" x 24" module	Ductile iron	Steel	\$ 657.00	\$ 473.00
T200-F-4-3	12" x 24" module	Ductile iron, Stainless steel veneer	Stainless Steel	\$ 1,453.50	\$ 835.00

T200 Series Optional Variations		List Price
-3M	3M epoxy finish	\$ 246.00
-6	Vandal proof	\$ 115.00
-13	All galvanized	\$ 246.00

### T200-FW Series

24" x 24" trench drain grate and frame assembly

Model Number	Size	Grate Material	Frame Material	List Price	24" wide
T200-FW	24" x 24" module	Cast iron	Steel	\$ 490.00	\$ 216.00
T200-FW-3	24" x 24" module	Cast iron grate with a Stainless steel veneer	Stainless steel	\$ 1,804.00	\$ 1,804.00
T200-FW-4	24" x 24" module	Ductile iron	Steel	\$ 886.00	\$ 612.00
T200-FW-4-3	24" x 24" module	Ductile iron grate with a Stainless steel veneer	Stainless steel	\$ 2,200.00	\$ 2,200.00

T200-FW Series Optional Variations		List Price
-6	Vandal proof	\$76.00 per grate
-13	All galvanized	\$246.00 per grate
-3M	3M epoxy finish	\$256.00 per grate

### T400-FL Series

24" x 24" heavy duty parking area catch basin

Model Number	WTL LBS.	Size	Epoxy coated steel body with cast iron (standard)	Stainless steel veneer (-3)	Ductile iron (-4)
T400-FL	175		2,422.00	3,736	\$ 2,818.00

T400-FL Series Optional Variations		List Price
-SI	No hub side inlet	\$ 72.50
-SIT	Side inlet with trap	\$ 125.00
-T	Deep seal trap	\$ 125.00
-X	Special "D" dimension	P.O.A.
-3M	3M epoxy finish	P.O.A.
-6	Vandal proof	\$ 35.00
-26	Hinged locking grate	\$ 76.00
-28	All Stainless steel	P.O.A.

**T480-FL Series**

12" x 12" heavy duty drain with internal trap

Model Number	WT. LBS.	Size	Epoxy coated steel body with: cast iron (standard)	Stainless steel veneer (-3)	Ductile iron (-4)
T480-FL	150			\$ 629.00	\$ 898.00

**T480-FL Series Optional Variations** List Price

-C	Membrane Clamp	No Add
-X	Special "C" dimension	P.O.A.
-3M	3M epoxy finish	P.O.A.
-6	Vandal proof	\$ 35.00
-7	Trap seal primer tapping	\$ 37.00
-12	Galvanized grate and frame	\$ 175.00
-13	All galvanized	\$ 314.00
-26	Hinged locking grate	\$ 76.00
-28	All Stainless steel	P.O.A.

**T500 Series**

24" x 24" heavy duty deep sump drain with bottom outlet

Model Number	WT. LBS.	Size	Epoxy coated steel body with: cast iron (standard)	Stainless steel veneer (-3)	Ductile iron (-4)
T500-FL	160		3,500.00	4,814	

**T500-FL Series Optional Variations** List Price

-FLC	Anchor flange and Membrane Clamp	\$ 270.00
-5	Sediment bucket	\$ 208.00
-6	Vandal proof	\$ 112.00
-8	Backwater valve	\$ 92.00

**T520-FL Series**

24" x 24" heavy duty drain with offset bottom outlet

Model Number	WT. LBS.	Size	Epoxy coated steel body with: cast iron (standard)	Stainless steel veneer (-3)	Ductile iron (-4)
T520-FL	160			\$ 2,850.00	\$ 4,164.00

**T520-FL Series Optional Variations** List Price

-5	Sediment bucket	\$ 208.00
-6	Vandal proof	\$ 112.00
-38	Solids retaining baffle	\$ 142.00

**T540-FL Series**

24" x 24" heavy duty parking area drain with side outlet

Model Number	WT. LBS.	Size	Epoxy coated steel body with: cast iron (standard)	Stainless steel veneer (-3)	Ductile iron (-4)
T540-FL	160			\$ 2,850.00	\$ 4,164.00

**T540-FL Series Optional Variations** List Price

-5	Sediment bucket	\$ 208.00
-6	Vandal proof	\$ 112.00
-38	Solids retaining baffle	\$ 142.00

**T640-FL Series**

12" x 12" drain with 4" wide anchor flange for elastomeric membrane

Model Number	WT. LBS.	Size	Epoxy coated steel body with: cast iron (standard)	Stainless steel veneer (-3)	Ductile iron (-4)
T640-FL	?			\$ 748.00	

**T640-FL Series Optional Variations** List Price

-5	Sediment bucket	\$ 57.00
-6	Vandal proof	\$ 36.00
-7	Trap seal primer tapping	\$ 37.00
-8	Backwater valve	\$ 92.00
-9	Hinged grate	\$ 100.00
-15	Extension	\$180.00 per inch
-26	Locking grate	\$ 32.00
-38	Solids retaining baffle	\$ 142.00

Cleanout Price List - August 14, 2000

**C100 Series**

C100-R Round cleanout for finished floors				Lacquered cast iron body with:		
Model #	WT Lbs.	Cover Size	No hub Outlet Size	Nickel Bronze (-1)	Polished Bronze (-2)	
C102-R	6.0	5" Round	2"	\$ 153.00	\$ 138.00	
C103-R	5.75	5" Round	3"	\$ 161.50	\$ 148.00	
C104-R	5.50	5" Round	4"	\$ 216.50	\$ 201.00	
C106-R	7.25	5" Round	6"	\$ 352.00	\$ 337.00	
C100-RC Round cleanout with carpet marker for carpeted floors				Lacquered cast iron body with:		
Model #	WT Lbs.	Cover Size	No hub Outlet Size	Nickel Bronze (-1)	Polished Bronze (-2)	
C102-RC	6.0	5" Round	2"	\$ 172.00	\$ 157.00	
C103-RC	5.8	5" Round	3"	\$ 180.50	\$ 167.00	
C104-RC	5.5	5" Round	4"	\$ 235.50	\$ 220.00	
C106-RC	7.3	5" Round	6"	\$ 371.00	\$ 356.00	
C100-S Square cleanout for finished floors				Lacquered cast iron body with:		
Model #	WT Lbs.	Cover Size	No hub Outlet Size	Nickel Bronze (-1)	Polished Bronze (-2)	Ductile Iron (-4)
C102-S	7.25	5" Square	2"	\$ 153.00	\$ 138.00	\$ 124.00
C103-S	7.00	5" Square	3"	\$ 161.50	\$ 148.00	\$ 143.00
C104-S	6.90	5" Square	4"	\$ 216.50	\$ 201.00	\$ 169.75
C106-S	8.50	5" Square	6"	\$ 352.00	\$ 337.00	\$ 296.00
C100-ST Square cleanout with recessed area to accept linotile				Lacquered cast iron body with:		
Model #	WT Lbs.	Cover Size	No hub Outlet Size	Nickel Bronze (-1)	Polished Bronze (-2)	
C102-ST	7.50	5" Square	2"	\$ 153.00	\$ 138.00	
C103-ST	7.25	5" Square	3"	\$ 161.50	\$ 148.00	
C104-ST	7.25	5" Square	4"	\$ 216.50	\$ 201.00	
C106-ST	8.75	5" Square	6"	\$ 352.00	\$ 337.00	
C100-T Round cleanout with recessed area to accept linotile				Lacquered cast iron body with:		
Model #	WT Lbs.	Cover Size	No hub Outlet Size	Nickel Bronze (-1)	Polished Bronze (-2)	
C102-T	6.0	5" Round	2"	\$ 153.00	\$ 138.00	
C103-T	5.8	5" Round	3"	\$ 161.50	\$ 148.00	
C104-T	5.5	5" Round	4"	\$ 216.50	\$ 201.00	
C106-T	7.3	5" Round	6"	\$ 352.00	\$ 337.00	
C100-U Round cleanout with recessed area to accept ceramic or terrazzo				Lacquered cast iron body with:		
Model #	WT Lbs.	Cover Size	No hub Outlet Size	Nickel Bronze (-1)	Polished Bronze (-2)	
C102-U	6.0	5" Round	2"	\$ 239.75	\$ 225.00	
C103-U	5.8	5" Round	3"	\$ 248.25	\$ 234.75	
C104-U	5.5	5" Round	4"	\$ 303.25	\$ 288.00	
C106-U	7.3	5" Round	6"	\$ 438.75	\$ 423.75	



C100-US Square cleanout with recessed area to accept ceramic or terrazzo						
Model #	WT	Cover	No hub	Lacquered cast iron body with:		
	Lbs.	Size	Outlet Size	Nickel Bronze (-1)	Polished Bronze (-2)	
C102-US	7.5	5" Square	2"	\$ 239.75	\$ 225.00	
C103-US	7.3	5" Square	3"	\$ 248.25	\$ 234.75	
C104-US	7.3	5" Square	4"	\$ 303.25	\$ 288.00	
C106-US	8.8	5" Square	6"	\$ 438.75	\$ 423.75	

C100-XR Heavy duty round cleanout for finished floor						
Model #	WT	Cover	No hub	Lacquered cast iron body with:		
	Lbs.	Size	Outlet Size	Nickel Bronze (-1)	Polished Bronze (-2)	Ductile Iron (-4)
C102-XR	6.30	5" Round	2"	\$ 191.00	P.O.A.	\$ 110.00
C103-XR	5.75	5" Round	3"	\$ 200.00	P.O.A.	\$ 119.00
C104-XR	5.50	5" Round	4"	\$ 255.00	P.O.A.	\$ 147.00
C106-XR	7.50	5" Round	6"	\$ 391.00	P.O.A.	\$ 246.00

C100-XS Heavy duty square cleanout for finished floor						
Model #	WT	Cover	No hub	Lacquered cast iron body with:		
	Lbs.	Size	Outlet Size	Nickel Bronze (-1)	Polished Bronze (-2)	Ductile Iron (-4)
C102-XS	7.25	5" Square	2"	\$ 191.00	P.O.A.	\$ 110.00
C103-XS	7.00	5" Square	3"	\$ 200.00	P.O.A.	\$ 119.00
C104-XS	6.90	5" Square	4"	\$ 255.00	P.O.A.	\$ 147.00
C106-XS	8.50	5" Square	6"	\$ 391.00	P.O.A.	\$ 246.00

#### List Price Options for the C100 Series

-4	Ductile iron	See above
-6	Vandal proof	\$ 23.00
-13	Galvanized	\$ 46.00
-34	Raised head plug (2", 3", 4")	\$ 46.50
-C (A1-C1)	Clamp ring	\$ 22.00
-M	Variation	Contact Mifab for Pricing
NH	No hub outlet	Standard
P	Push on outlet	No Add
T	Threaded outlet	\$ 19.00
X	Inside caulk outlet	No Add
-Z	Extended wide flange	\$ 115.00

### C200 Series

C200 Ferule cleanout with adjustable top and secondary brass plug				
Model #	WT	No hub	Lacquered cast iron body with:	
	Lbs.	Outlet Size	Nickel Bronze (-1)	Polished Bronze (-2)
C204	5.65	4"	\$ 154.00	\$ 145.00

### C300 Series

C300 Scoriated access covers				
Model #	WT	Description	Nickel Bronze	
	Lbs.			
C300-R8	5.00	8" round scoriated access cover	\$	86.00
C300-S9	6.00	9" square scoriated access cover	\$	216.00

## C400 Series

### C440 Expandable line cleanout

Model Number	WT		Pipe Size	List Price
	Lbs.			
C441-1/2	0.5		1-1/2"	\$ 10.00
C442	0.5		2"	\$ 13.00
C443	0.75		3"	\$ 14.50
C444	1		4"	\$ 33.50

### C440-RD Expandable line cleanout with round stainless steel, smooth access cover

Model Number	WT		Pipe Size	Cover Diameter	List Price
	Lbs.				
C441-1/2-RD	1.5		1-1/2"	4"	\$ 43.50
C442-RD	1.5		2"	4"	\$ 46.50
C443-RD	1.75		3"	5"	\$ 48.00
C444-RD	2		4"	6"	\$ 67.00

### C450 Line cleanout

Model Number	WT		Description	Add for cover only in nickel bronze		
	Lbs.			List Price		(-1)
C450-1	4.75		3" NB body w/ NB cover	\$ 67.50		-
C453-1	5.25		4" NB body w/ NB cover	\$ 67.50		-
C453-50	4.75		3" C.I. body w/ D.I. cover	\$ 36.75		-
C454-50	5.25		4" C.I. body w/ D.I. Cover	\$ 50.00		-
C453-60	3.25		3" P.V.C. body w/ D.I. Cover	\$ 36.75	\$ 17.50	
C454-60	3.50		4" P.V.C. body w/ D.I. Cover	\$ 50.00	\$ 17.50	
C453-61	3.25		3" ABS body w/ D.I. Cover	\$ 36.75	\$ 17.50	
C454-61	3.50		4" ABS body w/ D.I. Cover	\$ 50.00	\$ 17.50	

### C450-RD Line cleanout with round stainless steel, smooth access cover

Model Number	WT		Pipe Size	Cover Diameter	List Price
	Lbs.				
C453-RD6	5.75		3"	6"	\$ 78.25
C454-RD6	6.25		4"	6"	\$ 91.50

### C460 Cast iron stack cleanout with nickel bronze plug

Model Number	WT		Pipe Size	List Price
	Lbs.			
C462	3.50		2"	\$ 55.25
C463	5.50		3"	\$ 68.25
C464	7.50		4"	\$ 108.25
C466	21.50		6"	\$ 307.75
C468	25.00		8"	\$ 382.75

**C460-RD Cast iron stack cleanout with nickel bronze plug and round stainless steel, smooth access cover**

Model Number	WT		Cover		List Price
	Lbs.	Pipe Size	Diameter		
C462-RD	4.00	2"	7"		\$ 88.25
C463-RD	6.00	3"	7"		\$ 101.75
C464-RD	8.00	4"	7"		\$ 150.00
C466-RD	22.00	6"	7"		\$ 382.75
C468-RD	26.00	8"	7"		\$ 459.25

**C480-R Nickel bronze smooth wall access cover**

Model Number	WT		Cover		List Price
	Lbs.	Size			
C480-R8	5.00	8" round			\$ 86.75
C480-S9	6.00	9" square			\$ 216.00

**C480-RD Round stainless steel, smooth access cover**

Model Number	WT		Cover		List Price
	Lbs.	Diameter			
C480-RD4	0.50	4"			\$ 33.50
C480-RD7	0.50	7"			\$ 41.50
C480-RD9	0.75	9"			\$ 75.00
C480-RD10	1.00	10"			\$ 116.50

**C500 Series****C590 Bronze plug**

Model Number	WT		Pipe		List Price
	Lbs.	Size			
C591-1.5	0.25	1-1/2"			\$ 10.00
C592	0.25	2"			\$ 13.50
C592-1.5	0.40	2-1/2"			\$ 17.00
C593	0.50	3"			\$ 23.25
C594	0.50	4"			\$ 41.50
C595	0.75	5"			\$ 63.25
C596	0.85	6"			\$ 86.50
C598	1.25	8"			\$ 176.50

**C590-RD Bronze plug with round stainless steel, smooth access cover**

Model Number	WT		Pipe		Cover		List Price
	Lbs.	Size	Diameter				
C591-1.5-RD	0.75	1-1/2"	4"			\$ 43.50	
C592-RD	0.75	2"	4"			\$ 46.50	
C592-1.5-RD	1.00	2-1/2"	4"			\$ 50.00	
C593-RD	1.25	3"	4"			\$ 56.75	
C594-RD	1.25	4"	6"			\$ 75.00	
C595-RD	1.50	5"	6"			\$ 105.00	
C596-RD	1.75	6"	9"			\$ 161.50	
C598-RD	2.25	8"	10"			\$ 293.00	

## Roof Drain Price List - August 14, 2000

### R100 Series

R100 Small sump roof drain		Lacquered cast iron body with:	
Model #	WT Lbs. Outlet Size	No-Hub (Standard)	Metal Dome (-M)
R102-3,4	6.25 2", 3", 4"	\$ 129.00	\$ 173.00

R100-CP Small sump roof drain w 8" square top assembly		Lacquered cast iron body with:		Cast iron with	Ductile iron with
Model #	WT Lbs. Outlet Size	Cast iron (-50)	Ductile iron (-4)	Stainless steel veneer (-3)	Stainless steel veneer (-4,3)
R102-3,4-CP	10 2", 3", 4"	\$ 200.00	\$ 406.00	\$ 305.00	\$ 511.00

### R200 Series

R200 Large sump roof drain		Lacquered cast iron body with:	
Model #	WT Lbs. Outlet Size	Poly Dome (Standard)	Metal Dome (-M)
R202-3,4	26.00 2", 3", 4"	\$ 173.50	\$ 224.50
R206	25.00 6"	\$ 247.00	\$ 298.00
R208	25.00 8"	\$ 321.00	\$ 372.00

R200-CP Large sump roof drain with 12" square top assembly		Lacquered cast iron body with:		Cast iron with	Ductile iron with
Model #	WT Lbs. Outlet Size	Cast iron (-50)	Ductile iron (-4)	Stainless steel veneer (-3)	Stainless steel veneer (-3)
R202-3,4-CP	34 2", 3", 4"	\$ 295.00	\$ 445.00	\$ 541.00	\$ 691.00
R206-CP	33 6"	\$ 364.00	\$ 514.00	\$ 610.00	\$ 760.00
R208-CP	33 8"	\$ 433.00	\$ 583.00	\$ 679.00	\$ 829.00

R220 Medium sump roof drain		Lacquered cast iron body with:	
Model #	WT Lbs. Outlet Size	Poly Dome (Standard)	Metal Dome (-M)
R222,3,4,6	26.00 2", 3", 4", 6"	\$ 153.75	\$ 153.75

R220-CP Medium sump roof drain with 12" square top assembly		Lacquered cast iron body with:		Cast iron with	Ductile iron with
Model #	WT Lbs. Outlet Size	Cast iron (-50)	Ductile iron (-4)	Stainless steel veneer (-3)	Stainless steel veneer (-3)
R222-3,4,6-CP	34 2", 3", 4", 6"	\$ 264.00	\$ 397.00	\$ 446.00	\$ 579.00

### Roof Drain Price List for Optional Variations List Price Options for the R100 Series

-B	Sump receiver	\$ 61.75
-C	Secondary clamp	\$ 46.00
-E	Adjustable extension	\$ 41.50
-F1, -F2, -F3	Accuflow (parabolic weir)	\$ 110.00
-G	Ballast guard	\$ 113.50
-GC	Ballast guard with secondary clamp	\$ 113.50
-M-2	Rough bronze dome	\$ 81.50
-M-13	Galvanized metal dome	\$ 34.50
-M-80	Metal dome	\$ 43.50
-NH	No hub outlet	No add
P	Push on outlet	\$ 14.00
T	Threaded outlet	\$ 19.00
-U	Underdeck clamp	\$ 37.00
-W	Adjustable water dam	\$ 46.00
-W2	2" internal water dam	\$ 46.00
X	Inside Caulk Connection	No add
-Z	Extended wide flange	\$ 273.00
-3M	3M epoxy finish	\$ 186.00
-5	Sediment bucket	
-6	Vandal proof dome grate	\$ 28.00
-6	Vandal proof flat grate (R100-CP)	\$ 13.00
-11	Epoxy coated cast iron	P.O.A.
-13	Galvanized cast iron	\$ 42.50
-15	Adjustable extension	\$20.00 per inch
-82	Bronze mesh screen over dome	\$ 66.75
-83	Stainless steel mesh screen over dome	\$ 86.75
-90	No hub side outlet	\$ 45.00

### List Price Options for the R200 Series

-B	Sump receiver	\$ 66.00
-C	Secondary clamp	\$ 59.00
-E	Adjustable extension	\$ 161.50
-F1, -F2, -F3	Accuflow (parabolic weir)	\$ 287.00
-G	Ballast guard	\$ 192.00
-GC	Ballast Guard with secondary clamp	\$ 192.00
-J	Stainless steel ballast guard	\$ 192.00
-L	Vandal proof secured dome	\$ 30.00
-M	Ductile iron dome	\$ 51.00
-M-2	Rough bronze dome	\$ 202.00
-M-13	Galvanized metal dome	\$ 88.00
-M-80	Metal dome	\$ 60.00
-NH	No hub outlet	No add
P	Push on outlet	\$ 14.00
T	Threaded outlet	\$ 19.00
-U	Underdeck clamp	\$ 59.00
-W	Adjustable water dam	\$ 103.00
-W2	2" internal water dam	\$ 56.00
-W3	3" internal water dam	\$ 103.00
-W4	4" internal water dam	\$ 103.00
-Z	Extended wide flange	\$ 320.00
-3M	3M epoxy finish	\$ 332.00
-5	Sediment bucket	\$ 57.00
-6	Vandal proof	\$ 30.00
-11	Epoxy coated cast iron	P.O.A.
-13	Galvanized cast iron	\$ 206.00
-15	Extension	\$ 161.50
-82	Bronze mesh screen over dome	\$ 91.75
-83	Stainless steel mesh screen over dome	\$ 123.00
-90	No hub side outlet	\$ 90.00

List Price Options for the R220 Series

-B	Sump receiver	\$	61.75
-C	Secondary clamp	\$	45.00
-E	Adjustable extension	\$	41.50
-F1, -F2, -F3	Accuflow (parabolic weir)	\$	287.00
-G	Ballast guard	\$	153.75
-GC	Ballast guard with secondary clar	\$	153.75
-J	Stainless steel ballast guard	\$	153.00
-M	Metal dome	No add	
-M-2	Rough bronze dome	\$	99.00
-M-13	Galvanized metal dome	\$	34.50
-M-80	Metal dome	\$	43.00
-NH1	No hub outlet	No add	
P	Push on outlet	\$	14.00

List Price Options for the R220 Series Continued

T	Threaded outlet	\$	19.00
-U	Underdeck clamp	\$	37.25
-W	Adjustable water dam	\$	41.50
-W2	2" internal water dam	\$	41.50
-Z	Extended wide flange	\$	320.00
-3M	3M epoxy finish	\$	249.00
-5	Sediment bucket	\$	57.00
-6	Vandal proof	\$	28.00
-11	Epoxy coated cast iron	\$	249.50
-13	Galvanized cast iron	\$	85.00
-15	Adjustable extension	\$20.00 per inch	
-82	Bronze mesh screen over dome	\$	90.00
-83	Stainless steel mesh screen over dome	\$	114.00
-90	No hub side outlet	\$	37.75

<b>R300 - Scupper drain with angle grate and 90 degree outlet</b>						
Lacquered cast iron body with:						
Model #	WT Lbs.	No-Hub Outlet Size	Cast iron (-50)	Nickel bronze (-1)	Plain bronze (-2RB)	
R302-3,4	10.00	2", 3", 4"	\$ 151.50	\$ 399.00	\$	256.00

<b>R310 - Scupper drain with angle grate and 45 degree outlet</b>						
Lacquered cast iron body with:						
Model #	WT Lbs.	No-Hub Outlet Size	Cast iron (-50)	Nickel bronze (-1)	Plain bronze (-2RB)	
R312-3,4	10.00	2", 3", 4"	\$ 151.50	\$ 399.00	\$	256.00

<b>R320 - Scupper drain with flat grate and 90 degree outlet</b>						
Lacquered cast iron body with:						
Model #	WT Lbs.	No-Hub Outlet Size	Cast iron (-50)	Nickel bronze (-1)	Plain bronze (-2RB)	
R322-3,4	8.00	2", 3", 4"	\$ 161.50	\$ 409.00	\$	266.00

<b>R330 - Scupper drain with flat grate and 45 degree outlet</b>						
Lacquered cast iron body with:						
Model #	WT Lbs.	No-Hub Outlet Size	Cast iron (-50)	Nickel bronze (-1)	Plain bronze (-2RB)	
R332-3,4	8.00	2", 3", 4"	\$ 161.50	\$ 409.00	\$	266.00

List Price Options for the R300 Series

T	Threaded outlet	No add	
-6	Vandal proof	\$	13.00
-13	Galvanized	\$	51.00
-82	Bronze mesh screen	\$	129.00

<b>R900 - Vertical expansion joint</b>				
Model #	WT Lbs.	No-Hub Outlet Size	List Price	
R902	2.00	2"	\$ 161.00	
R903	2.50	3"	\$ 173.00	
R904	3.00	4"	\$ 196.00	
R906	3.50	6"	\$ 326.00	
R908	4.00	8"	\$ 575.00	

<b>R940 - Downspout nozzle</b>					
Model #	WT Lbs.	Threaded Outlet Size	Nickel bronze (-1)	Polished bronze (-2)	Plain bronze (-2RB)
R942-3,4	?	2", 3", 4"	264	\$ 223.00	\$ 153.00
R946	?	6"	\$476.00	\$ 434.00	\$ 364.00

List Price Options for the R940 Series

-83	Stainless steel screen	\$	128.00
-----	------------------------	----	--------

## Josam - MIFAB Comparison Guide

### Josam - MIFAB Roof Drain Comparison Guide

Josam	MIFAB
21000	R200-E
21500	R200
21500-19	R200-G
21500-IRMA	R200-GC
21500-IRMA-6	R200-C-G-Z
22000	R220-M
22010	R220
22080	R100
22250	R220-U
23000	R200-CP
23010	R200-CP-90
23500	R200-CP
23500-IRMA	R200-CP-15
23500-IRMA-6	R200-CP-Z-15
23510	F340C-Y
23530	R200-CP
23710	R220-CP
23730	R100-P
23740	R100-P-4
24020	F320-Y-Z-14
24030	F340-Y-14-Z
24200	R200-CJPZ
24700	R300
24710	R310
24720	R320
24730	R330
25010	R940
25500	R200-R-20
25520	R220-R-20
25540	R100-R-20
26000	R200-E-W
26010	R200-R
26200	R900
28500	R200-E-F
28600	R220-F

### Josam - MIFAB Floor and Area Drain Comparison Guide

Josam	MIFAB
30000-A	F100C*
30000-AJ	F100C-8*
30000-C	F100C-5*
30000-E1	F100C-ER*
30000-E2	F100C-EF*
30000-E3	F100C-EG*
30000-6E	F100C-N16*
30000-7E	F100C-N7*
30000-9E	F100C-N9*
30000-R	F100C-R5*
30000-S	F100C-S*
31100	F320C-14*
31120	F320C-S-14*
31200	F340-14
31210	F340-90
31220	F340-S-14

### Josam - MIFAB Roof Drain Options Comparison Guide

Josam	MIFAB
-1	Underdeck clamp
-2	Sump receiver
-3	Deck clamp assembly with sump receiver
-4	Secondary clamp ring
-10	Fixed extension
-10-20	Fixed extension, galvanized finish
-15	Rough bronze clamping collar
-17	2" high solid clamping collar
-20	All galvanized
-21	Galvanized dome
-30	Vandal proof
-66	No hub side outlet
-Y	Push on outlet
-Z	No hub outlet
	-U
	-B
	-BU
	-C
	-E
	-E-12
	-C-2
	-R
	-13
	-12
	-6
	-90
	P
	standard

### Josam - MIFAB Floor and Area Drain Options Comparison Guide

Josam	MIFAB
-1	Nickel bronze
-2	Polished bronze
-3	Buff polished nickel bronze
-4	Buff polished bronze
-5	Rough nickel bronze top
-6	Rough bronze top
-7	Ductile iron
-8	Stainless steel screen dome
-10	Less grate
-11	Extra heavy duty grate
-12	Square top
-13	Dome grate
-15	Chained grate
-17	Vandal proof
-19	Cast iron undergrate with N.B top
-20	Cast iron undergrate with satin bronze top
-21	Loose set grate
-22	Less locking device
-40	Less flange
-41	Membrane clamp
-42	Membrane clamp
-43	Levelling studs
-44	Extension
-45	Integral extension
-49	3/4" trap seal primer tapping
-50	Trap seal primer tapping
-51	1 1/2" auxillary threaded connection
-52	2" auxillary threaded connection
-53	2" auxillary hub
-54	2" spigot inlet
-60	Backwater valve
-61	Less backwater valve
-62	T handle closure plug
-63	Plug wrench adapter
-64	Bronze closure plug
-66	No hub side outlet
-70	Less bucket
	-1
	-2
	-10
	describe
	describe
	describe
	-4
	-83
	-22
	standard
	-16
	-18
	-23
	-6
	-3
	-2
	-14
	describe
	-33
	-C
	-C
	describe
	-15
	-15
	-7.75
	-7
	-44
	-44
	-44, 2" hub
	-44, 2" spigot
	-8
	describe
	describe
	describe
	-34B
	-90
	describe

Josam	MIFAB	Josam	MIFAB
31600	F320C*	-71	Solid bucket
31720	F340C*	-72	Solid bucket with bronze screen ports
31800	F440-4-5	-74	Solid aluminum bucket
32100	F320C-Y-14*	-75	Solid aluminum bucket with bronze screen
32120	F320C-Y-5-14*	-80	Sediment bucket
32200	F340C-Y-14-Q*	-81	Cast iron bucket
32220	F340C-Y-14-Q-5*	-82	Aluminum bucket
32300	F340C-Y-14*	-88	Secondary strainer
32320	F340C-Y-14-5*	-89	Underdeck clamp
35440	F440-14	-91	Rough bronze body
35460	F460-14	-92	Galvanized finish
35620-A	F440-5-26	-93	All cast iron
36000	F320-C-Y*	-94	Bronze dome
36210	F340-Y-Q	-98	Control box
36410	F360C-Y*	T	Threaded outlet
36640	F440-5-9-90	-W	Extension
36850	use trench drain equiv.	-Y	Push on outlet
37500	F420-Y	-Z	No hub outlet
37770	F440-5-33		
37800	F440-Y-14		
37810	F440C-Y-4-5*		
39600	F810C*		

\* includes "C" membrane clamp in areas with waterproof membrane.  
 As recommended alternate, use F100 in non membrane areas,  
 delete "C" membrane clamp.

**Josam - MIFAB Floor Drain 30000 Series  
 Adjustable Strainer Variations  
 Comparison Guide**

Josam	MIFAB	Josam	MIFAB
A-5A	-5	F8	-J
A-6A	-6	F9	-G
A-7A	-7	M	-WD
A-8A	-8	R-5R	-RS-48
AD-6AD	-FC-7	R-6R	-RS-412
AD-9AD	-FC-9	S-5S	-S5
AF	-FT6	S-6S	-S6
A-5	-5-8	SJ	-S8
AJ-6	-6-8	SJ-3SJ	-S5-8
C-5	-5-5	SJ-6SJ	-S6-8
E	-N	W	-15
E1	-ER	WF6S	-S6-Z
E2	-EF	-80	-5
E3	-EG	30000 (bdy assy)	A1-C*
EJ	-N-8	30200 (bdy assy)	A1-C*
F4	-F4		

**Josam - MIFAB Floor Sink  
Comparison Guide**

Josam	MIFAB
49000	FS-520-FL-1
49010	FS-520-1
49020AS	FS-720-FL-1
49030AS	FS-720-1
49040AS	FS-730-FL-1
49050AS	FS-730-1
49060AS	FS-740-FL-1
49070AS	FS-740-1
49300	FS-520-FL
49310	FS-520
49320A	FS-720-FL
49330A	FS-720
49330A	FS-730-FL
49350A	FS-730
49360A	FS-740-FL
49370A	FS-740

**Josam - MIFAB Floor Sink Options  
Comparison Guide**

Josam	MIFAB
-2	Less grate
-3	Half grate
-4	3/4 grate
-10	Secured grate
-15	Stainless steel rim and grate
-16	Grate with 4" round funnel
-17	Grate with 6" round funnel
-18	Grate with 4" x 9" funnel
-31	Sediment bucket
-45	Less bottom dome strainer
-51	Galvanized finish
-52	Painted inside and out
-55	Trap seal primer tapping
-C	Membrane clamp
-X	Inside caulk outlet
-Z	No hub outlet

**Josam - MIFAB Cleanout Comparison Guide**

Josam	MIFAB
56000	C100-R
56000-12	C100-T
56000-14	C100-RC
56010	C100-R
56010-12	C100-T
56010-14	C100-RC
56020	C100-S
56020-12	C100-ST
56020-14	C100-S-RC
56030	C100-S
56030-12	C100-ST
56030-14	C100-S-RC
56040	C100-XR
56040-13	C100-U
56040-14	C100-T
56050	C100-XR
56050-13	C100-U
56050-14	C100-RC
56060	C100-XR
56060-14	C100-RC
56070	C100-XR
58180	C450
58190	C450
58360	C200
58370A	C100C-R*
58460A	C100-RY
58500	C450
58510	C460
58540	C590
58600	C480-RD
58616-10	C300-R9
58616	C480-R9
58644	C480-S9
58644-10	C300-S9
58710	C450-RD
58790	C460-RD
58890	C590-RD
58900	C450
58910	C460

**Josam - MIFAB Cleanout Options  
Comparison Guide**

Josam	MIFAB
-1	Nickel bronze
-2	Polished bronze
-5	Ductile iron
-15	Vandal proof
-31	Galvanized cast iron
-41	Membrane clamp
-F	Anchor flange
-Y	Push on outlet
-Z	No hub outlet

**Josam - MIFAB Trench Drain Comparison Guide**

Josam	MIFAB
76000	T120-FL
76010	T175-FL
76500	T150
76501	T150F
76700	T200
76701	T200F

**Josam - MIFAB Trench Drain Options  
Comparison Guide**

Josam	MIFAB
-1	Nickel bronze
-2	Polished bronze
-7	Ductile iron
-20	Vandal proof
-30	Anchor flange and membrane clamp
-40	Galvanized finish
-65	Backwater valve
-70	Sediment bucket
-X	Inside caulk outlet

\* includes "C" membrane clamp in areas with waterproof membrane.  
As recommended alternate, use C100 in non membrane areas,  
delete "C" membrane clamp.



## Smith - MIFAB Comparison Guide

### Smith - MIFAB Roof Drain Comparison Guide

Smith	MIFAB	Smith	MIFAB
1010	R200	1482	R100-P-4-90
DX1010	R200-Z	1510	R300
1011	R200-G	1520	R320
1015	R200-E	1530	R310
1016	R200-GC	1540	R330
1017	R200-GC	1710	R900
1018	R200-GC-Z	1770	R940
1019	R200-G-Z		
1020	R200-90		
1070	R200-R		
1074	R200-E-R		
1080	R200-R		
1083	R200-F		
1084	R200-F		
1088	R200-F-90		
1089	R200-F-90		
DX1240	F320-Y-Z-14		
1310	R220		
1320	R220-90		
1330	R100		
1340	R100-90		
1409	R200-CP-15		
1410	R200-CP-15		
1415	R200-CP-15		
1416	F360C*		
1419	R200-CPZ-15		
1420	R200-CP-90		
1422	R200-CP		
1425	R200-CP-15-90		
1440	R200-CP		
1450	R220-CP		
1460	R220-CP-90		
1470	R100-P		
1472	R100-P-4		
1480	R100-P-90		

Smith - MIFAB Roof Drain Options Comparison Guide			
Smith		MIFAB	
-C	Underdeck clamp	-U	
-CID	Metal dome	-M	
-CIDG	Galvanized dome	-M-12	
-CL	Underdeck clamp	-U	
-C2	Secondary clamp	-C	
-DX	Extended wide flange	-Z	
-G	Galvanized body	-13	
-G	Stainless steel ballast guard	-G	
-H	Heel proof grate	standard	
L	Push on outlet	P	
-LD	Less dome	- Less dome	
-M	Ductile iron grate	-4	
-N	Nickel bronze grate	-1	
-P	Polished bronze grate	-2	
-R	Sump receiver	-B	
-RBD	Rough bronze dome	-M-2	
-SM	Stainless steel mesh over dome	-83	
-U	Vandal proof	-6	
-WD	Water dam	-R2,3,4	
Y	No hub outlet	standard	
-WD02	2" water dam	-R2	

### Smith - MIFAB Floor and Area Drain Comparison Guide

Smith	MIFAB	Smith	MIFAB
2005	F100C*	DX2312B	F320C-14-5-Z*
2005A	F100C*	2315	F320C-14-90*
DX-2005A	F100C-Z*	2320	F320C*
2005B	F100C-S*	2325	F320C-90*
DX-2005B	F100C-S-Z*	2330	F340C-14*
2005B5	F100C-S-6D*	2331	F340C-Q-14*
2005C	F100C-X*	2335	F340-14-90
2005D	F100C-N*	2340	F340
2005F	F100C-FT6*	2341	F340-Q
2005F37	F100C-ER*	2345	F340-90

Smith	MIFAB	Smith	MIFAB
2005 (bdy assy)	A1-C body*	2350	F320C-5-14*
2005K	F100C-XS*	2355	F320C-5-14-90*
2005L	F100C-RS*	2360	F340C-14-5*
2005M	F100C-RS*	2365	F340C-5-14-90*
2005Y	F100C-WD*	2370	F420-Y-5
2010A	F100C*	2372	F460-5
DX-2010-A	F100C-Z*	2375	F440-5
2010B	F100C-X*	2377	F440
2010BS	F100C-S-6D*	2385	F420-Y-26
2010AV	F100C-8*	2388	F420-Y-26-90
DX-2010-B	F100C-S-Z*	2402	F420-Y
2010C	F100C-X*	2410	F440-5-26
2010F	F100C-S-FT6*	2412	F420-Y-14-5
2010F38	F100C-ER*	2414	F440-5-26
2010E	F100C-N*	2425	F440-5-26-90
2010K	F100C-XS*	2430	use trench drain number
2010L	F100C-RS*	2435	use trench drain number
2010V	F100C-S*	2440	use trench drain number
2010Y	F100C-WD*	2445	use trench drain number
2015	F190C*		

**Smith - MIFAB Floor and Area Drain Comparison Guide**

Smith	MIFAB	Smith	MIFAB
2110	F320C-Y-14*	2450	F460-5
2115	F320C-90-Y-14*	2452	F460-5
2120	F320C-Y*	2453	F460-5
2125	F320C-90-Y*	2455	F460-5-90
2130	F340-Y-Q-14	2458	F460-5-90
2131	F340-Y-14	2470	F440-5-9
2135	F340-Y-Q-14-90	2473	F440-C-5-90*
2140	F340-Y-Q	2475	F440-5-9-90
2141	F340-Y	2478	F440C-5-9-90*
2142	F340-Y-5	2484	F490
2143	F360C-Y*	2487	F440-4
2145	F340-Y-90	2488	F460-4-5
2147	F340-Y-14-5-90	DX2566	F340-Y-Z-5-14
2210	F320-Y-S-14	2570	use trench drain number

**Smith - MIFAB Floor and Area Drain Comparison Guide**

Smith	MIFAB	Smith	MIFAB
2215	F320-Y-5-14-90	2587	use trench drain number
2220	F320C-Y-5-14*	2624	F360-67
2225	F320C-Y-5-14-90*	2675	F820C*
2230	F340-Y-14-5	2680	F870C-P*
2233	F340-Y-14-5	2685	F870C-PL*
2235	F340-Y-5-90	3510	F100C-EF*
2238	F340-Y-5-90	3515	F100C-EF*
2250	F360C-Y-5*	3610	F320C-F-4*
2255	F360C-Y-5-90*	3620	F320C-90-F-4*
2270	F320-M-14	3650	F320C-G*
2271	F320C-M*	3660	F320C-90-G*
2275	F320-Y-14-90	3710	F320C-Y-14-F4*
2310	F320C-14*	3720	F320C-Y-14-90-F4*
DX2312	F320C-Y-14-Z*	3750	F320C-Y-14-G*
		3760	F320C-Y-14-G-90*

\* includes "C" membrane clamp in areas with waterproof membrane.

As recommended alternate, use F100 in non membrane areas, delete "C" membrane clamp.

Smith - MIFAB Floor Drain 2000 Series  
Adjustable Strainer Variations  
Comparison Guide

Smith	MIFAB
3580	-F4
3591	-G
-A-05	-5
-A-06	-6
-A-07	-7
-AB-05	-5-5
-AV-05	-5-8
-AV-06	-6-8
-B-05	-S5
-B-06	-S6
-BS	-6D

Smith - MIFAB Floor Drain 2000 Series  
Adjustable Strainer Variations  
Comparison Guide

Smith	MIFAB
-C-05	-X5
-C-06	-X6
-D	-N
-E	-N9
-F	-FT6
-F10	-EF
-F11	-EF
-F12	-S-F4
-F19	-EG
-F37	-ER
-F40	-W
-K	-XS
-K-05	-XS5
-K-06	-SX6
-L	-RS-48
-M	-RS-412
-X	-15
-Y	-WD
-Z	-WD

Smith - MIFAB Trench Drain  
Comparison Guide

Smith	MIFAB
2710	T175
2710-DH	T175
2810	T120
2900	T100F-3
2910	T150F
2920	T200F
2940	T200
2941	T200F
2950	T200F
2970	T200F
2980	T200F

Smith - MIFAB Floor and Area Drain Options  
Comparison Guide

Smith	MIFAB
-94	Push on outlet P
-AB	Sediment bucket -5
-B	Sediment bucket -5
-BFV	Backwater valve -8
-BG	Galvanized sediment bucket -5-13
-BV	Backwater valve -8
C	Inside caulk outlet X
-C	Membrane clamp -C
-D	Dome grate -18
-E	Extension -15
-F	4" round funnel -F4

Smith - MIFAB Floor and Area Drain Options  
Comparison Guide

Smith	MIFAB
-FBS	Secondary strainer -21
-G	Galvanized finish -13
L	Push on outlet P
-M	Ductile iron -4
-N	Auxillary inlet -44
-NH	Auxillary inlet -44
-NL	Auxillary inlet -44
-P	Trap seal primer tapping -7
-R	Membrane clamp -C
-S	Square top -16
T	Threaded outlet T
-U	Vandal proof -6
-V	Backwater valve -8
-X	Extension -15
-XP	Closure plug -34
Y	No hub outlet standard

Smith - MIFAB Trench Drain Options  
Comparison Guide

Smith	MIFAB
C	Inside caulk outlet X
-DBSC	Secondary dome -20
-F	Anchor flange -FL
-F-C	Anchor flange with memb -FLC
-G	Galvanized finish -13
-HP	Heel proof standard
-M	Ductile iron -4
-T	Threaded outlet T
-U	Vandal proof -6
-VCI	Backwater valve -8
-VG	Backwater valve -8
Y	No hub outlet standard

**Smith- MIFAB Floor Sink  
Comparison Guide**

Smith	MIFAB
3100	FS-520-FL-1
3101	FS-520-FL-1-5
3110	FS-720-FL-1
3120	FS-730-FL-1
3130	FS-740-FL-1
3140	FS-720-FL-1
3141	FS-720-FL-1-5
3150	FS-730-FL-1
3151	FS-730-FL-1
3160	FS-740-FL-1
3161	FS-740-FL-5

**Smith- MIFAB Cleanout  
Comparison Guide**

Smith	MIFAB
4020	C100-R
4020-F	C100-R
4020-FC	C100C-R*
4020-S	C100-R
4021	C100-R
4022	C100-R
4023-S	C100-R
4031	C100P-R
4031-F	C100P-R
4031-FC	C100C-R*
4031-L	C100P-R
4032	C100P-R
4033	C100P-R
4033-L	C100P-R
4040 to 4053-L	C100-S
4100 to 4113-L	C100-XR
4120 to 4133-L	C100-R
4140 to 4153-L	C100-T
4160 to 4173-L	C100-ST
4180 to 4193-L	C100-U
4200 to 4213-L	C100-US
4220 to 4233-L	C100-XR
4237 to 4248-L	C100-XR
4280	C450
4280-S	C450
4283-S	C450
4313	C100C-R*
4400	C450
4401	C450-RD
4402	C450-RD
4420	C450

**Smith - MIFAB Floor Sink Options  
Comparison Guide**

Smith	MIFAB
-10	Less nickel bronze rim anc -22
-11	Less grate with nickel brot describe
-12	Half grate -150
-13	3/4 grate -175
-21	Grate with 4" funnel -F4
-22	Grate with 6" funnel -F6
-25	4" x 9" funnel -G
-26	6" x 3" x 1" funnel -J
C	Inside caulk outlet X
-C	Membrane clamp -C
-CI	Lacquered cast iron -101
-FBS	Secondary strainer -21
-G	All galvanized -13
-L	Push on outlet P
-U	Vandal proof -6
Y	No hub outlet standard

**Smith- MIFAB Cleanout  
Comparison Guide**

Smith	MIFAB
4421	C450-RD
4450	C450
4452	C450-RD
4470	C590
4471	C590-RD
4472	C590-RD
4510	C460
4530	C460-RD
4710	C480-RD
4725	C480-R
4735	C480-S
4810	C300-R
4930	C300-S

**Smith - MIFAB Cleanout Options  
Comparison Guide**

Smith	MIFAB
-DX	Extended wide flange -Z
-F	Anchor flange standard
-F-C	Membrane clamp -C
-G	Galvanized finish -13
-M	Ductile iron -4
-U	Vandal proof -6
-Y	Carpet marker -RC

\* includes "C" membrane clamp in areas with waterproof membrane.

As recommended alternate, use C100 in non membrane areas,  
delete "C" membrane clamp.

Wade - MIFAB Comparison Guide

Wade - MIFAB Floor and Area Drain Comparison Guide

Wade	MIFAB
(W)-1100	F100C*
(W)-1100-AX	F100C-X*
(W)-1100-DT	F100C-Z*
(W)-1100-DTS	F100C-S-Z*
(W)-1100-ER	F100C-ER*
(W)-1100-F	F100C-F16*
(W)-1100-FC	F100C-FC*
(W)-1100-G	F100C-S*
(W)-1100-H	F100C-RS*
(W)-1100-IS	F100C-N*
(W)-1100-WD	F100C-WD*
(W)-1100 body	A1-C* body
(W)-1160	F190C*
(W)-1200	F340-Y-Q
(W)-1200-E	F340-Y-Q-Z
(W)-1200-PG	F340-Y-14-67
(W)-1200-TD	F340-Y-Q-5-14
(W)-1210	F340-Y
(W)-1210-E	F340-Y-Z
(W)-1210-PG	F340-Y-67
(W)-1210-TD	F340-Y-5
(W)-1230	F340-Y-90
(W)-1240	F340
(W)-1300	F320C-14*
(W)-1300-TDY	F320C-5-14*
(W)-1310	F320C-Y-14*
(W)-1310-TD	F320C-Y-5-14*
(W)-1340	F320C-14*
(W)-1340-TD	F320C-5-14*
(W)-1350	F320C-S-14*
(W)-1350-TD	F320C-S-5-14*
(W)-1400	F460C-Y-Q*
(W)-1410	F460-Y
(W)-1450	F460-Y-90
(W)-1640	F320C-M-14*
(W)-2000	F600
(W)-2300	F440-Y-Q-14
(W)-2310	F440-Y-14
(W)-2340	F440-14
(W)-2350	F420-Y-14

Wade - MIFAB Floor and Area Drain Options Comparison Guide

Wade	MIFAB	
-1	Nickel bronze	-1
-2	Polished bronze	-2
-4	Square top	-16
-5	Vandal proof	-6
-6	Trap seal primer tapping	-7
-7	Dome grate	-18
-8	Secondary strainer	-20
-11	Heel proof grate	standard
-12	Ductile iron	-4
-13	Tractor grate	standard
-23	Extension	-15
-27	Sediment bucket	-5
-30	Bacwater valve	-8
-31	Backwater valve	-8
-33	Closure plug	-34
-37	Auxilliary tapping	-44
-39	Galvanized finish	-13
-40	Galvanized top only	-12
-41	Galvanized finish	-13
-52	Sump receiver	-41
-53	Underdeck clamp	-40
-61	Acid resistant epoxy coating	-11
-94	Extension	-15
-106	Bronze mesh bucket	-35
-DI	Ductile iron	-4
-E	Extended wide flange	-Z
-EF4	4" round funnel	-F4
-EF6	6" funnel	-F6
-EG6	6" x 3" funnel	-J-1
-EG8	4" x 9" funnel	-G
-IC	Inside caulk outlet	X
-IPS	Threaded outlet	T
-NH	No hub outlet	standard
-TY	Push on outlet	P

\* includes "C" membrane clamp in areas with waterproof membrane.

As recommended alternate, use F100 in non membrane areas, delete "C" membrane clamp.

**Wade - MIFAB Floor Drain 1100 Series  
Adjustable Strainer Variations  
Comparison Guide**

Wade	MIFAB
STD5	-5
STD6	-6
STD7	-7
AX	-X
DT	-6-Z
DTS	-S-Z
ER	-ER
F	-FT6
FC	-FC
G	-S
H	-RS
TS	-N
WD	-WD

**Wade - MIFAB Roof Drain  
Comparison Guide**

Wade	MIFAB
(W)-3000	R200
(W)-3000-AE	R200-BE
(W)-3000-FCS	R200-F
(W)-3000-PA	R200-P
(W)-3000-SD	R200-W
(W)-3010	R200-E-U
(W)-3020	R200
(W)-3030	R200-90
(W)-3100	R200-CP
(W)-3130-SO	R200-CP-90
(W)-3200	R100
(W)-3200-P	R100-P
(W)-3210	R100-90
(W)-3220	R220
(W)-3220-A	R220-90
(W)-3220-PA	F810C*
(W)-3220-RS	R220-RM
(W)-3270	R300
(W)-3270-A	R310
(W)-3290	R320
(W)-3290-A	R330
(W)-3900	R900
(W)-3940	R940

**Wade - MIFAB Trench Drain Comparison Guide**

Wade	MIFAB
2902A2	T200
2902D	T200F
2920	T175
2950	T120-FL

**Wade - MIFAB Trench Drain Options  
Comparison guide**

Wade	MIFAB	
-1	Nickel bronze	-1
-2	Polished bronze	-2
-5	Vandal proof	-6
-12	Ductile iron	-4
-26	Membrane clamp	-C
-27	Sediment bucket	-5
-31	Backwater valve	-8
-39	Galvanized finish	-13
-40	Galvanized top only	-12

**Wade - MIFAB Floor Sink Options  
Comparison Guide**

Wade	MIFAB	
-1	Nickel bronze	-1
-5	Vandal proof	-6
-15	Half grate	-150
-16	3/4 grate	-175
-26	Membrane clamp	-C
-27	Sediment bucket	-5
-64	Acid resistant epoxy coating	standard
NH	No hub outlet	standard
TY	Push on outlet	P

**Wade - MIFAB Roof Drain Options  
Comparison Guide**

Wade	MIFAB	
-39	Galvanized finish	-13
-50	Bronze mesh screen over dome	-82
-52	Sump receiver	-B
-53	Underdeck clamp	-U
-54	Secondary clamp ring	-C
-AE	Extension	-E

**Wade - MIFAB Cleanout  
Comparison Guide**

Wade	MIFAB
(W)-6000	C100-R
(W)-6000-D	C100-R-Z
(W)-6000-S	C100-S
(W)-6000-T	C100-T
(W)-6000-TS	C100-ST
(W)-6000-U	C100-U
(W)-6000-US	C100-US
(W)-6000-X	C100-XR
(W)-6000-XS	C100-XS
(W)-6000-Z	C100-XR
(W)-6030-SV	C100-R
(W)-6030-SV-D	C100-R-Z
(W)-6030-SV-S	C100-S
(W)-6030-SV-X	C100-XR
(W)-6030-SV-XS	C100-XS
(W)-7000	C106-R
(W)-8130-AF	C200
(W)-8190	C100C-R*
(W)-8240	C100C-14-R*
(W)-8300-C	C300-R
(W)-8300-S	C300-S
(W)-8300-SS	C300-S
(W)-8450-R	C450-RD
(W)-8460-R	C460-RD
(W)-8470-R	C590-RD
(W)-8480-C	C480-R
(W)-8480-R	C480-RD
(W)-8480-S	C480-S
(W)-8550	C450
(W)-8550-R	C450
(W)-8560	C460-RD
(W)-8590	C590-RD

**Wade - MIFAB Roof Drain Options  
Comparison Guide**

Wade		MIFAB
-BG	Stainless steel ballast guard	-G
-D	Water dam	-R
-DF	Extension	-E
-DFS	Stainless steel ballast guard	-G
-DP	Stainless steel ballast guard	-G
-NH	No hub outlet	standard
-TY	Push on outlet	P

**Wade - MIFAB Cleanout Options  
Comparison Guide**

Wade		MIFAB
-39	Galvanized finish	-13
-72	Carpet marker	-RC
-179	Vandal proof	-6
-D	Extended wide flange	-Z
NH	No hub outlet	standard
-T	Round tile top	-T
-TS	Square tile top	-ST
TY	Push on outlet	P
-U	Round terrazo top	-U
-US	Square terrazo top	-US
-X	Heavy duty round top	-XR
-XS	Heavy duty square top	-XS

\* includes "C" membrane clamp in areas with waterproof membrane.

As recommended alternate, use C100 in non membrane areas, delete "C" membrane clamp.

Watts - MIFAB Comparison Guide

Watts - MIFAB Floor and Area Drain Comparison Guide

Watts	MIFAB
FD-100	F100C-X*
FD-100-A	F100C*
FD-100-B	F100C-X*
FD-100-DD	F100C-DD*
FD-100-EF	F100C-EF*
FD-100-EG	F100C-EG*
FD-100-ER	F100C-ER*
FD-100-FC	F100C-FC*
FD-100-FT6	F100C-FT6*
FD-100-L	F100C-XS*
FD-100-L-6D	F100C-S-6D*
FD-100-M	F100C-S*
FD-100-RS	FD-100C-RS*
FD-100-WD	F100C-WD*
FD-160-C	F190C*
FD-200	F100-X
FD-200-A	F100
FD-200-B	F100-X
FD-200-DD	F100-DD
FD-200-EF	F100-EF
FD-200-EG	F100-EG
FD-200-ER	F100-ER
FD-200-FC	F100-FC
FD-200-FT6	F100-FT6
FD-200-L	F100-XS
FD-200-M	F100-S
FD-200-RS	F100-RS
FD-200-WD	F100-WD
FD-300	F300
FD-310	F300-Y-14
FD-320	F320C*
FD-320Y	F320-Y-14
FD-330	F420
FD-330-Y	F420-Y
FD-340	F340
FD-340Y	F340-Y
FD-360	F360
FD-390-E	F110
FD-390-E-63	F110-WF
FD-450	F460
FD-460	F440
FD-460-F	F440-Y
FD-490	T640FL-C-5-9*
FD-600	F600
FD-620	F620
FD-860	F810C*
FD-860-PA	F810C*
FD-870-P	F870C-P*
FD-870-PA	F820C*
FD-870-PL	F870C-PL*
FD-900	F340-Y-67-5
FD-900	F360-Y-67-5

Watts - MIFAB Floor and Area Drain Options Comparison Guide

Watts	MIFAB
-1	Nickel bronze
-2	Polished bronze
-3	Stainless steel
-4	Ductile iron
-5	Sediment bucket
-6	Vandal proof
-7	Trap seal primer tapping
-8	Backwater valve
-11	Acid resistant epoxy coating
-12	Galvanized top only
-13	Galvanized finish
-14	Non tilt grate
-15	Extension
-16	Square top
-18	Dome grate
-20	Secondary dome
-21	Secondary strainer
-22	Less grate
-28	All Stainless steel
-29	All Stainless steel (316)
-31	Flange
-32	Anchor flange and membrane clamp
-34	Closure plug
-35	Bronze mesh bucket
-36	Garbage can assembly
-38	Solids retaining baffle
-39	Full flow grate
-40	Deck clamp
-41	Sump receiver
-42	Perforated standpipe
-43	Solid standpipe
-44	1 1/2" or 2" auxillary inlets
-48	Chrome plated grate
-49	Chrome plated strainer assembly
-50	Cast iron
-3M	3M epoxy finish
-C	Membrane clamp
-F4	4" funnel
-F4-1	4" Nickel bronze funnel
-F4-50	4" Cast iron funnel
-F6-1	6" Nickel bronze funnel
-F6-50	6" Cast iron funnel
-G	4" x 9" funnel
-G-1	4" x 9" Nickel bronze funnel
-G-50	4" x 9" Cast iron funnel
-H-1	5" x 17" Nickel bronze funnel
-H-50	5" x 17" Cast iron funnel
-J-1	6" x 3" Nickel bronze funnel
-P	Push on outlet
-90	No hub side outlet
T	Threaded outlet
X	Inside caulk outlet
-Z	Extended wide flange

\* includes \*C\* membrane clamp in areas with waterproof membrane.  
As recommended alternate, use F100 in non membrane areas,  
delete \*C\* membrane clamp.



Watts - MIFAB Floor Drain FD-100/200 Series  
Adjustable Strainer Variations Comparison Guide

Watts	MIFAB
A5-1	5-1
A6-1	6-1
A7-1	7-1
B5-1	X5-1
B5-50	X5-4
B6-1	X6-1
DD-50	DD-50
DD-1	DD-1
EF4-1	EF-1
EF4-50	EF-50
EG-1	EG-1
EG-50	EG-50
ER7-1	ER7-1
FC	FC
FT6-1	FT6-1
L5-1	X55-1
L6-1	X56-1
L6D-1	S-6D
M5-1	S5-1
M6-1	S6-1
N7-1	N7-1
RS	RS

Watts - MIFAB Floor Sink Comparison Guide

Watts	MIFAB
FS-710	FS-520
FS-710-F	FS-520-FL
FS-730	FS-720
FS-730-F	FS-720-FL
FS-740	FS-730
FS-740-F	FS-730-FL
FS-750	FS-740
FS-750-F	FS-740-FL

Watts - MIFAB Trench Drain  
Comparison Guide

Watts	MIFAB
TD-900	T150
TD-900-B	T150-F
TD-910	T200
TD-910-B	T200-F
TD-920	T175-FL
TD-940	T120-FL
FD-410	T400-FL
FD-500	T480-FL
FD-520	T540-FL
FD-530	T520-FL
FD-540	T500
FD-550-F	T120-FL

Watts - MIFAB Floor Drain FD-100/200 Series  
Body Assemblies Comparison Guide

Watts	MIFAB
B3-2	A1-2NH
B3-3	A1-3NH
B3-4	A1-4NH
B3-6	A1-6NH
B3-2P	A1-2P
B3-3P	A1-3P
B3-4P	A1-4P
B3-2X	A1-2X
B3-3X	A1-3X
B3-4X	A1-4X
B4-2	A1-2NH
B4-3	A1-3NH
B4-4	A1-4NH
B4-2P	A1-2P
B4-3P	A1-3P
B4-4P	A1-4P

Watts - MIFAB Floor Sink Options  
Comparison Guide

Watts		MIFAB
-1	Nickel bronze rim and grate	-1
-3	Stainless steel rim and grate	-3
-5	Sediment bucket	-5
-6	Vandal proof	-6
-7	Trap seal primer tapping	-7
-21	Secondary strainer	-21
-22	Less grate	-22
-150	Half grate	-150
-175	3/4 grate	-175
-F	Anchor flange	-FL
-FC	Anchor flange and membrane clamp	-FLC
-F4	4" round funnel	-F4
-F6	6" round funnel	-F6
-G	4" x 9" funnel	-G
P	Push on outlet	P
X	Inside caulk outlet	X

Watts - MIFAB Trench Drain Options  
Comparison Guide

Watts		MIFAB
-1	Nickel bronze	-1
-3	Stainless steel	-3
-4	Ductile iron	-4
-5	Sediment bucket	-5
-6	Vandal proof	-6
-12	Galvanized grate only	-12
-13	Galvanized finish	-13
-20	Secondary dome	-20
-21	Secondary outlet strainer	-21
-28	All stainless steel body	-28
-32	Anchor flange and membrane clamp	-FLC
-38	Solids retainer baffle	-38
-113m	3M epoxy finish	-3M
P	Push on outlet	P
S	No hub side outlet	-90
T	Threaded outlet	T
X	Inside caulk outlet	X

**Watts - MIFAB Roof Drain  
Comparison Guide**

Watts	MIFAB
RD-100	R200
RD-100-A	R200-F
RD-100-BED	R200-EU-B
RD-100-BVD	R200-EU-B
RD-100-CH	R200-GC
RD-100-CJ	R200-GC
RD-100-CP	R200-CP
RD-100-CP-15	R200-CP-15
RD-100-GSS	R200-G
RD-100-O	R200-O
RD-100-R	R200-R
RD-100-S	R200-90
RD-100-W	R200-W
RD-100-Z	R200-Z
RD-110-BD	R210-BU
RD-200	R100
RD-200-A	R100-A
RD-200-BED	R100-EU-B
RD-200-CJ	R100-GC
RD-200-CP	R100-CP
RD-200-GSS	R100-G
RD-200-W	R100-W
RD-220	R220
RD-220-BED	R220-EUB
RD-220-CJ	R220-GC
RD-220-R	R220-R
RD-220-VD	R220-EU
RD-260	R150
RD-270	R300
RD-270-A	R310
RD-290	R320
RD-290-A	R330
RD-300	R200
RD-300-CH	R200-GC
RD-300-GSS	R200-G
RD-900	R900
RD-940	R940

**Watts - MIFAB Cleanout  
Comparison Guide**

Watts	MIFAB
CO-200	C450
CO-200-R	C100-R
CO-200-RC	C100-RC
CO-200-RX	C100-XR
CO-200-RX-4	C100-XR-4
CO-200-S	C100-S
CO-200-T	C100-T
CO-200-TS	C100-ST
CO-200-U	C100-U
CO-200-US	C100-US
CO-260	C100C-R*
CO-300-R	C300-R
CO-300-S	C300-S
CO-380	C450
CO-390-E	C450
CO-440-A	C440
CO-450-RD	C450-RD
CO-460	C460
CO-460-RD	C460-RD

**Watts - MIFAB Roof Drain Options  
Comparison Guide**

Watts	MIFAB	
-1	Nickel bronze	-1
-2	Polished bronze	-2
-3	Stainless steel	-3
-4	Ductile iron	-4
-6	Vandal proof	-6
-11	Acid resistant epoxy coating	-11
-12	Galvanized top only	-12
-13	Galvanized finish	-13
-A	Parabolic weir	-F
-B	Sump receiver	-B
-BE	Sump receiver extension	-BE
-BED	Sump receiver and deck clamp	-BEU
-C	Secondary clamp	-C
-D	Underdeck clamp	-U
-E	Adjustable extension	-E
-GSS	Stainless steel ballast guard	-G
-K	Ductile iron dome	-M-4
-K13	Galvanized dome	-M-13
-K80	Aluminum dome	-M
-P	Push on outlet	P
-S	No hub side outlet	-90
-STD	No hub outlet	standard
-V	Extension	-E
-W	Internal water dam	-W
-W-1	Water proofing flange	-W
-Z	Extended wide flange	-Z

**Watts - MIFAB Cleanout  
Comparison Guide**

Watts	MIFAB
CO-480	C480-RD
CO-480-R	C480-R
CO-480-S	C480-S
CO-590	C590
CO-590-RD	C590-RD

**Watts - MIFAB Cleanout Options  
Comparison Guide**

Watts	MIFAB	
-1	Nickel bronze	-1
-2	Polished bronze	-2
-4	Ductile iron	-4
-6	Vandal proof	-6
-13	Galvanized finish	-13
-34	Secondary closure plug	-34
No hub	No hub outlet	standard
P	Push on outlet	P

\* includes "C" membrane clamp in areas with waterproof membrane.  
As recommended alternate, use C100 in non membrane areas,  
delete "C" membrane clamp.

Zurn - MIFAB Comparison Guide

Zurn - MIFAB Roof Drain Comparison Guide

Zurn	MIFAB
Z-100	R200
Z-100-EC	R200-EU
Z-100-ERC	R200-EU-B
Z-100-84	R200-G
Z-100-85	R200-GC
Z-105	R200-F
Z-105-EC	R200-EU-F
Z-105-ERC	R200-EU-B-F
Z-105-EA-R-C	R200-EU-B-F
Z-107	R200-Z
Z-108	R200-R
Z-121	R220
Z-121-EC	R220-EU
Z-121-ERC	R220-EU-B
Z-122	R220-R
Z-125	R100M
Z-125-ERC	R100-EU-B-M
Z-127	R100-M-R
Z-143	F440-4-5
Z-144	F440-4
Z-150	R200-CP
Z-150-80	R200-CP-28, or -29
Z-150-90	R200-CP-90
Z-151	R-200-CP-15
Z-153	R200-CP-90
Z-153-1	R200-CP-90
Z-154	R220-CP
Z-155	R220-CP with an R-900
Z-156	R220-CP-90
Z-156-1	R220-CP-90
Z-158	R100-CP
Z-159	R100-CP-90
Z-187	R300
Z-187-FG	R320
Z-189	R330
Z-189-OB	R310
Z-199	R940
Z-327	R220-R

Zurn - MIFAB Floor and Area Drain Comparison Guide

Zurn	MIFAB
Z-328	-F4
Z-329	-G
Z-348	F820C*
Z-349	F870C-PL*
Z-350	F870C-P*
Z-400	see adjustable strainers
Z-415	F100C*
Z-415-B	F100C*
ZB-415-B	F100C-2*

Zurn - MIFAB Roof Drain Options Comparison Guide

Zurn Suffixes		MIFAB Suffixes
-84	Ballast guard	-G
-85	Ballast guard with secondary clamp	-GC
-89	2" external water dam	-R2
-90	No hub side outlet	-90
-AC	Deck clamp	-U
-AR	Acid resistant epoxy coating	-11
-AW	Adjustable water dam	-R
-BS	Bronze mesh screen over dome	-82
-C	Underdeck clamp	-U
-DX	Extended wide flange	-Z
-E	Adjustable extension	-E
-EA	Adjustable extension	-E
-G	Galvanized cast iron	-13
-GD	Galvanized metal dome	-M-13
-HD	Metal dome	-M
-NH	No hub outlet	standard
-NL	Push on outlet	P
-R	Sump receiver	-B
-SC	Secondary clamp	-C
-SS	Stainless steel mesh screen over dome	-83
-TS	Vandal proof	-6
-VP	Vandal proof	-6
-W2	2" internal water dam	-R2
-W3	3" internal water dam	-R3
-W4	4" internal water dam	-R4
-XJ	Expansion joint	R-900

Zurn - MIFAB Roof Drain Options Comparison Guide

Zurn Prefixes		MIFAB Suffixes
Z	Poly dome	standard
ZA	Metal dome	M-80
ZC	Metal dome	M
ZRB	Rough bronze dome	M-2

Zurn - MIFAB Floor and Area Drain Comparison Guide

Zurn	MIFAB
Z-537	F460-67
Z-540	F340C-Y-5*
Z-540-76	F340C-Y-28, or -29, or -59*
Z-540-77	F340C-Y-28, -29, or -59*
Z-540-1-76	F420C-Y-5-90-28, or -29, or -59*
Z-541	F340C-Y-14-5*
Z-541-90	F340C-Y-14-5-90*
Z-541-15	F340C-Y-5-14-Z*
Z-542	F340-Y-90

**Zurn - MIFAB Floor and Area Drain  
Comparison Guide**

Zurn	MIFAB
ZN-415-B	F100C-1*
Z-415-B-HD	F100C-X*
Z-415-BL	F100C-Z *
Z-415-E	F100C-EF*
Z-415-H	F100C-FC*
Z-415-I	F100C-ER*
Z-415-J	F100C-RS*
Z-415-N	F100C-N*
Z-415-O	F100C-F16*
Z-415-P	F100C-WD*
Z-415-S	F100C-S*
Z-415-6SC	F100C-S-6D*
Z-415-S-HD	F100C-XS*
Z-415-SL	F100C-S-Z*
Z-503	F360-4-14-Q
Z-503-76	F360-4-YQ-14-28, -29, or -59
Z-504	F340-Y-Q-14
Z-505	F340-Y-14
Z-505-76	F340-Y-Q-14-28, or -29, or -59
Z-506	F340-Y-Q-14-90
Z-507	F300
Z-508	F320C-Y*
Z-509	F340C-Y-Q*
Z-509-90	F340C-Y-Q-90*
Z-509-T	F440-Y-Q
Z-512	F340-Y
Z-512-90	F340-Y-8
Z-513	F420C-Y-5-9*
Z-516	F340C-4-Y-Q*
Z-516-76	F340-Y-Q-28, or -29, or -59
Z-520	F320C*
Z-521	F340
Z-521-T	F440
Z-523	F340-90
Z-525	F320C-14*
Z-526	F340-14
Z-526-90	F340-14-90
Z-532	F340-Y-14-5-Z
Z-534	F340-67
Z-535	T640C-5-9*
Z-536	F360-Y-67

**Zurn - MIFAB Floor Drain 400 Series  
Adjustable Strainer Variations  
Comparison Guide**

Zurn	MIFAB
Z-414	-F4
Z-414-1	-G
B-5B	-5
B-6B	-6

**Zurn - MIFAB Floor and Area Drain  
Comparison Guide**

Zurn	MIFAB
Z-542-1	F340-Y-5-90
Z-543	F360C-Y-5-14*
Z-543-90	F360C-Y-14-5-90*
Z-544	F360-Y-5
Z-544-1	F360-Y-5-90
Z-545	F360C-Y-14*
Z-545-90	F360C-Y-90-14*
Z-546	F360-Y-5
Z-546-1	F360-Y-5-90
Z-550	F320C-Y-14*
Z-551	F320-M-14
Z-554	F320C-Y-5-14*
Z-556	F320C-M*
Z-587	F440-Y-Q
Z-601	F420-Y-5
Z-605	F440-5-90
Z-606	F340-Y-5-90
Z-609	F420-Y-4-14
Z-610	F440C-Y-5*
Z-611	F420C-Y*
Z-615	F440-Y-5-90
Z-616	F420C-Y-5-14-90*
Z-618	F440-Y-5-19
Z-619	F440-Y-5-19-90
Z-620	F440-Y-5-26
Z-622	F440-5-26
Z-623	F440-Y-5-26-90
Z-624	F620
Z-625	F600-A
Z-626	C600C-RX*
Z-627	F620
Z-662	F460C-Y-5
Z-663	F460-Y-5-90
Z-675	F440-4-5
Z-676	F440-4

\* includes "C" membrane clamp in areas with waterproof membrane.  
As recommended alternate, use F100 in non membrane areas,  
delete "C" membrane clamp.

**Zurn - MIFAB Floor and Area Drain Options Comparison Guide**

Zurn Prefixes	MIFAB Suffixes
Z	Cast iron standard
ZB	Polished bronze top -2
ZN	Nickel bronze -1
ZAB	All bronze -27
ZANB	All nickel bronze -1

Zurn Suffixes	MIFAB Suffixes
-4	4" round funnel -F4

Zurn	MIFAB
B-7B	-7
BL	-Z5
E	-EF
H	-FC
I	-ER
J	-RS
N	-N
P	-WD
S	-S
SC	-L6D
SL	-SZ6
S-HD	-XS
S-PD	-S
SL	-Z6
U	-15
Y	-5
YL	-Z6
-6SC	-S-6D

**Zurn - MIFAB Trench Drain Comparison Guide**

Zurn	MIFAB
Z-645	T480-FL
Z-664	T120-FL
Z-665	T200-F
Z-667	T120-FL
Z-668	T220
Z-673	T500-5
Z-782	T100
Z-782-F or -L	T100-F
Z-784	T150
Z-784-F or -L	T150-F
Z-792	T200
Z-792-F or -L	T200-F
Z-794	T200
Z-794-F or -L	T200-F

**Zurn - MIFAB Cleanout Comparison Guide**

Zurn	MIFAB
Z-1400	C100-R
Z-1400-CM	C100-RC
Z-1400-DC	C100-XR
Z-1400-T	C100-S
Z-1400-TX	C100-ST
Z-1400-X	C100-T
Z-1400-Z	C100-U
Z-1400-1-KC	C100C-S*
Z-1400-3	C100-S
Z-1400-16-KC	C100C-R-Z*
Z-1400-18	C100-R-Z
Z-1402	C100-R-M
Z-1405-KC	C100C-R*

Zurn Suffixes		MIFAB Suffixes
-90	No hub side outlet	-90
-AA	3M epoxy finish	-3M
-AR	Acid resistant epoxy coating	-11
-C	Membrane clamp	-C or -40
-DG	Ductile iron	-4
-DP	Decorative polished top	-10
-D8	Secondary dome	-20
-F	Extension	-15
-FG	Non tilt grate	-14
-G	Galvanized finish	-13
-GG	Galvanized top only	-12
-H	Ductile iron	-4
-HD	Heavy duty	-4
-HP	Heel proof	standard
-J	Auzillary inlets	-44
-P	Trap seal primer tapping	-7
-R	Sump receiver	-41
-S	Secondary strainer	-21
-SS	Stainless steel mesh lined bucket	-83
-T	Square top	-16
-TS	Secured grate	-6
-U	Extension	-15
-V	Backwater valve	-8
-VP	Vandal proof	-6
-W	Closure plug	-34
-Y	Sediment bucket	-5

**Zurn - MIFAB Trench Drain Options Comparison Guide**

Zurn Prefixes		MIFAB Suffixes
Z	Cast iron	standard
ZAB	All bronze	-2
ZANB	Nickel bronze with stainless steel fram	-3

Zurn Suffixes		MIFAB Suffixes
-DG	Ductile iron	-4
-F	Frame	-FL
-G	Galvanized finish	-13
-VP	Vandal proof	-6

**Zurn - MIFAB Cleanout Comparison Guide**

Zurn	MIFAB
Z-1430-KC	C100C-XR*
Z-1430-1-KC	C100C-XS*
Z-1430-2	C100-XR
Z-1430-3	C100-S
Z-1435-KC	C100C-XR*
Z-1435-1-KC	C100C-XS*
Z-1435-2	C100-XR
Z-1435-3	C100-XS
Z-1440	C450
Z-1441	C450-RD
Z-1444	C100-R-M
Z-1445	C460
Z-1446	C460-RD

Zurn	MIFAB
Z-1405-2	C100-R
Z-1405-3	C100-S
Z-1405-18	C100-R-Z
Z-1406	C100-XR
Z-1410-KC	C100C-XR*
Z-1410-1-C	C100C-XS*
Z-1410-2	C100-XR
Z-1410-3	C100-XS
Z-1410-16-KC	C100C-XR-Z*
Z-1410-18	C100-XR-Z
Z-1415-KC	C100C-XR*
Z-1415-1-KC	C100C-XS*
Z-1415-2	C100-XR
Z-1415-3	C100-XS
Z-1420-KC	C100C-R*
Z-1420-1-KC	C100C-S*
Z-1420-2	C100-R
Z-1420-3	C100-S
Z-1420-7	C100-XR
Z-1420-24-KC	C100C-XR*
Z-1420-25	C100-XR
Z-1420-26-KC	C100C-XR*
Z-1425-KC	C100C-R*
Z-1425-1-KC	C100C-S*
Z-1425-2	C100-R
Z-1425-3	C100-S
Z-1425-24-KC	C100C-XR*
Z-1425-25	C100-XR
Z-1425-26-KC	C100C-XR*
Z-1425-27	C100-XR

\* includes "C" membrane clamp in areas with waterproof membr.  
As recommended alternate, use C100 in non membrar.  
delete "C" membrane clamp.

#### Zurn - MIFAB Floor Sink Comparison Guide

Zurn	MIFAB
Z-1900	FS-720
Z-1901	FS-730
Z-1902	FS-740
Z-1910	FS-520

Zurn	MIFAB
Z-1449	C200
Z-1450-KC	C100C-XR*
Z-1450-1	C100-XR
Z-1454	C100C-R*
Z-1455	C100C-R-Y*
Z-1460	C480-S
Z-1460-SC	C300-S
Z-1463	C300-S
Z-1463-ST	C480-R
Z-1466	UA
Z-1467	MI-VB
Z-1468	C590-RD
Z-1469	C480-RD
Z-1470	C590

#### Zurn - MIFAB Cleanout Options Comparison Guide

Zurn Prefixes		MIFAB Suffixes
Z	Cast iron body and top	standard
ZB	Polished bronze top	-2
ZN	Nickel bronze top	-1
Zurn Suffixes		MIFAB Suffixes
-A	Raised head plug	-A
-AR	Acid resistant epoxy coating	-11
-BP	Vandal proof	-6
-DC	Ductile iron	-4
-DX	Extended flange	-Z
-G	Galvanized finish	-13
-K	Anchor flange	standard
-KC	Membrane clamp	-C
-SG	Gasketed cover	standard

#### Zurn - MIFAB Floor Sink Options Comparison Guide

Prefixes		MIFAB
Z-	C.I. Body with white A.R.E. interior	standard
ZN-	C.I. Body with white A.R.E. interior and nickel bronze frame and grate	-1
Suffixes		MIFAB
-1	Less grate	-22
-2	Half grate	-150
-3	3/4 grate	-175
-5	Grate with 4" funnel	-F4
-6	Grate with 6" funnel	-F6
-7	Grate with 6" x 3" x 1" funnel	-J
-8	Grate with 4" x 9" funnel	-G
-11	Vandal proof grate	-6
-25	White A.R.E. bucket	-11
-K	Anchor flange	-FL
-KC	Anchor flange and membrane clamp	-FLC
-LD	Less bottom dome strainer	describe
-P	Trap seal primer tapping	-7

List Price Options for the F110 and F110-WF Series

-3M	3M epoxy finish	\$	63.00
-5	Sediment bucket	\$	26.00
-6	Vandal proof	\$	13.75
-8	Backwater valve	\$	92.00
-60	PVC socket outlet		No add
-61	ABS body with socket outlet		No add
-F4-1	4" NB round funnel	\$	103.00
-F4-50	4" cast iron round funnel	\$	42.00
-G-1	4" x 9" NB oval funnel	\$	213.00
-G-50	4" x 9" cast iron oval funnel	\$	118.00

**F150 Series**

<b>F150 4" round floor drain with membrane clamp and hardware</b>				Lacquered cast iron body with:		
Model #	WT Lbs.	Strainer Size	No hub outlet size	Nickel Bronze (-1)	Polished Bronze (-2)	Chrome Plated (-49)
F150C						
F152,3,4C	3.50	4"	2", 3", 4"	\$ 85.00	\$ 80.00	\$ 75.00
F152TC	3.65	4"	2" I.P.S.	\$ 85.00	\$ 80.00	\$ 75.00

**F190 Series**

<b>F190 Round floor drain with side outlet, membrane clamp and hardware</b>				Lacquered cast iron body with:		
Model #	WT Lbs.	Strainer Size	No hub outlet size	Nickel Bronze (-1)	Polished Bronze (-2)	Ductile Iron (-4)
F190C						
F192,3,4C-5	12.00	5"	2", 3", 4"	\$ 170.75	\$ 165.25	\$ 155.75
F192,3,4C-6	12.75	6"	2", 3", 4"	\$ 196.75	\$ 181.75	NA

When no membrane clamp is required, delete suffix (-C) (part number A1-C2) and deduct \$22.00 from the List Price.

**F200 Series**

<b>F200 5" round floor drain</b>				Lacquered cast iron body with:	
Model #	WT Lbs.	Strainer Size	No hub outlet size	Nickel Bronze (-1)	Polished Bronze (-2)
F204	5.50	5"	4"	\$ 107.00	NA

### F300 Series

Model #	WT Lbs.	Strainer Description	Lacquered cast iron body with:			
			No hub outlet size	Ductile Iron (-4)	Nickel bronze (-1)	Stainless steel (-3)
F302,3,4C	12.00	7" Dia. Adj. tractor grate	2", 3", 4"	\$ 129.95	\$ 203.50	\$ 203.50
F302,3,4C-14	12.00	7" Dia. Adj. flat grate	2", 3", 4"	\$ 100.00	\$ 173.50	\$ 173.50
F302,3,4C-Y	12.00	7" Dia. Non-Adj. tractor grate	2", 3", 4"	\$ 107.75	\$ 181.50	\$ 181.50
F302,3,4C-Y-14	12.00	7" Dia. Non-Adj. flat grate	2", 3", 4"	\$ 105.00	\$ 178.00	\$ 178.00

F300 - when no membrane clamp is required,  
delete suffix (-C) (part number A1-C1) and deduct \$22.00 from the List Price.

### F320 Series

Model #	WT Lbs.	Strainer Description	Lacquered cast iron body with:			
			No hub outlet size	Ductile Iron (-4)	Nickel bronze (-1)	Stainless steel (-3)
F322,3,4-C	15.50	9" Dia. Adj. tractor grate	2", 3", 4"	\$ 203.00	\$ 326.00	\$ 326.00
F322,3,4-C-14	15.50	9" Dia. Adj. flat grate	2", 3", 4"	\$ 173.00	\$ 296.00	\$ 296.00
F322,3,4-C-Y	15.50	9" Dia. Non-Adj. tractor grate	2", 3", 4"	\$ 163.00	\$ 299.50	\$ 299.50
F322,3,4-C-Y-14	15.50	9" Dia. Non-Adj. flat grate	2", 3", 4"	\$ 123.00	\$ 256.50	\$ 256.50

F320 - when no membrane clamp is required,  
delete suffix (-C) (part number A1-C1) and deduct \$22.00 from the List Price.

#### Deduct for:

(-M)	\$103.00	F320C model only
(-M-14)	\$101.00	F320C model only

#### List Price Options for the F300, F300C, F320 and F320C Series

-3M	3M epoxy finish	\$ 124.75
-5	Sediment bucket	\$ 33.50
-6	Vandal proof	\$ 31.00
-7	Trap seal primer tapping	\$ 37.00
-8	Backwater valve	\$ 92.00
-11	Acid resistant epoxy coating	\$ 41.50
-13	Galvanized cast iron	\$ 91.00
-15	Extension	\$ 33.00
-20	Secondary dome grate	\$ 20.00
-21	Secondary strainer	\$ 10.00
-34	Closure plug	\$ 88.50
-40	Underdeck clamp	\$ 37.00
-41	Sump receiver	\$ 61.75
-90	No hub side outlet	\$ 53.75
P	Push on outlet	\$ 14.00
T	Threaded outlet	\$ 19.00
X	Inside caulk outlet	No Add
-Z	Extended wide flange	\$ 139.50
-F4-1	4" NB round funnel	\$ 103.00
-F4-2	4" PB round funnel	\$ 87.00
-F4-50	4" cast iron round funnel	\$ 42.00
-G-1	4" x 9" NB oval funnel	\$ 213.00
-G-2	4" x 9" PB oval funnel	\$ 197.50
-G-50	4" x 9" cast iron oval funnel	\$ 118.00
-J-1	6" x 3" x 1" NB oval funnel	\$ 103.00
-J-2	6" x 3" x 1" PB oval funnel	\$ 88.00
-J-50	6" x 3" x 1" cast iron oval funnel	\$ 42.00



- **Access Doors**

- **Trap Seal Primers**

- **Interceptors**

- **Hydrants**

- **Drains**



1-800-465-2736 (USA)    1-800-387-3880 (CAN)  
[www.mifab.com](http://www.mifab.com)